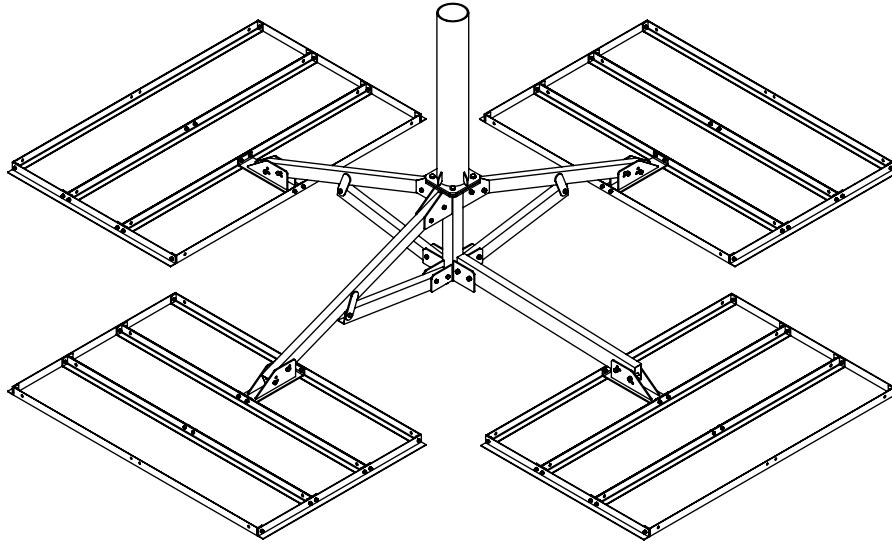


# VL4-T-(000X0)-RP



SYM	PART#	DESCRIPTION	QTY.
1	AB1037(9)HD	VL4 BASE ASSY, HDG	1
2	AS REQ'D	MAST ASS'Y- DIA. & LENGTH AS REQ'D, HDG	1
3	AB1512AHD	PL2/VL4 ARM ASS'Y, HDG	3
4	AB1136AHD	PL2/VL4 BRACE TUBE, HDG	3
5	AB1150HD	VL4 4TH LEG TUBE, HDG	1
6	AB1756HD	FOOT ASS'Y, HDG	4
7	H1-0625-200GR8	5/8"x 2" BOLT GR.8, Y/Z	4
8	H4-0625LW	5/8" SPLIT LOCKWASHER, Z/P	4
9	H2-0625HN	5/8" NUT , Z/P	4
10	AB1119BHD	6' BALLAST ANGLE, HDG	24
11	AB1120AHD	TRIPLE TRAY PAD (1.5x2Lx48"), HDG	8
12	H1-0500-350	1/2" x 3-1/2" BOLT GR.5, Z/P	25
13	H4-0500LW	1/2" SPLITLOCKWASHER, Z/P	25
14	H2-0500HN	1/2" NUT, Z/P	25
15	H1-0375-100	3/8" x 1" BOLT GR.5, Z/P	72
16	H4-0375LW	3/8" SPLITLOCKWASHER, Z/P	72
17	H2-0375HN	3/8" HEX NUT, Z/P	72
		1/8" RUBBER PAD 48"x77"	4
		PALLET	1

HDWE-28X350  
QTY.1

HDWE-BT  
QTY.5

## PROPRIETARY AND CONFIDENTIAL

THE INFORMATION CONTAINED IN THIS DRAWING IS THE SOLE PROPERTY OF BAIRD SUPPORTING SYSTEMS. ANY REPRODUCTION IN PART OR AS A WHOLE WITHOUT THE WRITTEN PERMISSION OF BAIRD SUPPORTING SYSTEMS IS PROHIBITED.



WWW.BAIRD MOUNTS.COM

## UNLESS OTHERWISE SPECIFIED:

DIMENSIONS ARE IN INCHES  
TOLERANCES:  
FRACTIONAL ±  
ANGULAR: MACH ± BEND ±  
TWO PLACE DECIMAL ±  
THREE PLACE DECIMAL ±

DO NOT SCALE DRAWING

## BAIRD MOUNTING SYSTEMS

WATERLOO, IA 50703  
PHONE: 319-233-3561  
SALES@BAIRDMOUNTS.COM

TITLE:  
VL4, TRIPLE TRAY, MAST, RUBBER MAT,  
PALLET

DRAWN BY  
JK

MATERIAL  
STEEL

DWG. PURPOSE  
INST

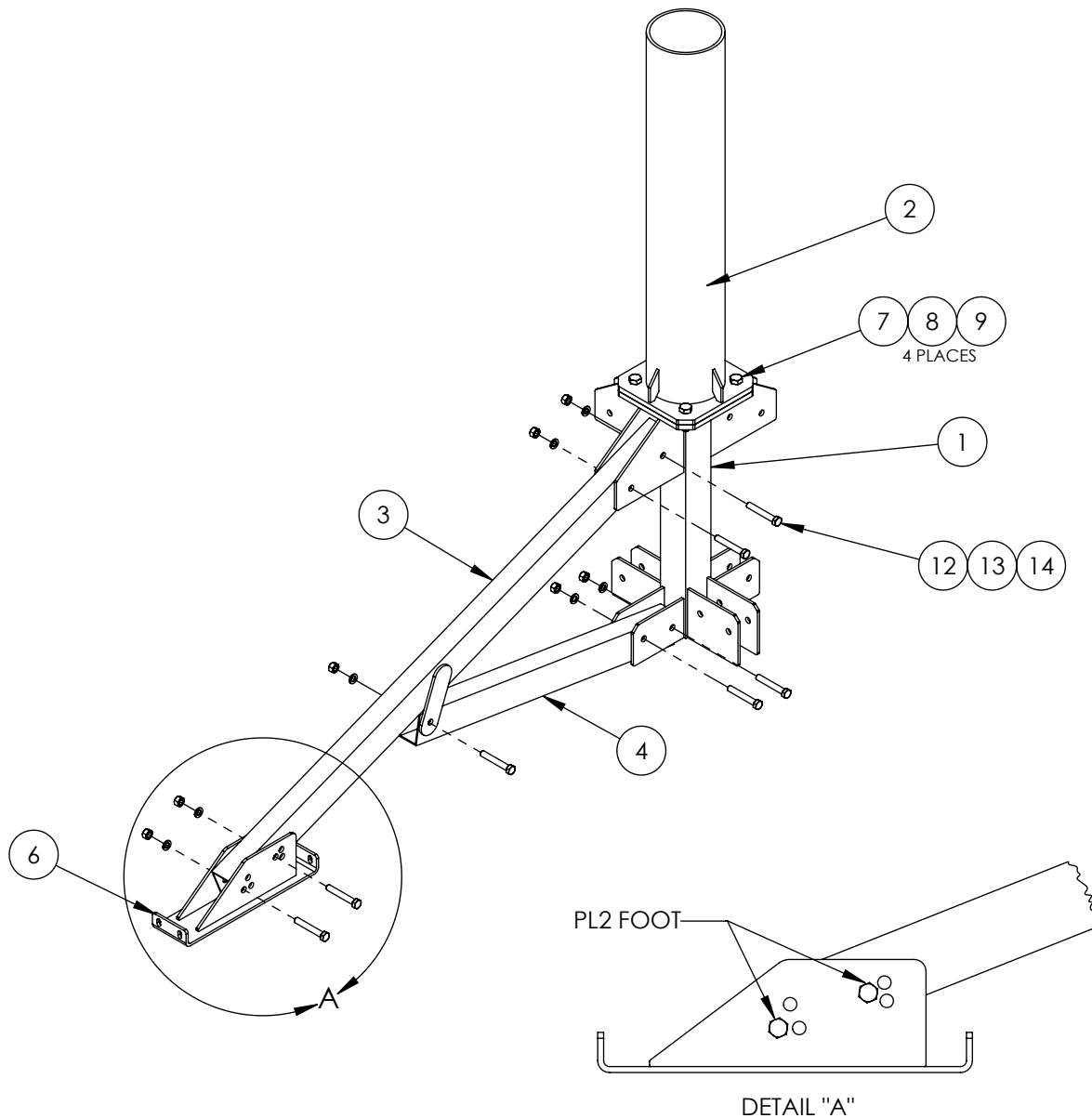
DATE  
09/01/20

FINISH  
HDG

SHEET  
1 OF 4

SCALE  
-

PART. NO.  
VL4-T-(000X0)-RP  
DWG. NO.  
VL4-T-(000X0)-RP ASS'Y INST.



- Attach the arm(#3) to the upper fins using (2) 1/2"x3-1/2" bolts, lockwashers and nuts.
- Next, attach the brace tube(#4) to the lower fins on the base using (2) 1/2"x3-1/2" bolts, lockwashers and nuts.
- Bolt the foot(#6) to the end of the arm using (2) 1/2"x3-1/2" bolts, lockwashers and nuts.
- Repeat this procedure for thres more sides of the mount. It may help to place the mount on a 3" tall block to keep pressure off the arms while aligning the bolt holes. **Do not tighten hardware until assembly is complete and mount is in its final location.**

**PROPRIETARY AND CONFIDENTIAL**

THE INFORMATION CONTAINED IN THIS DRAWING IS THE SOLE PROPERTY OF BAIRD SUPPORTING SYSTEMS. ANY REPRODUCTION IN PART OR AS A WHOLE WITHOUT THE WRITTEN PERMISSION OF BAIRD SUPPORTING SYSTEMS IS PROHIBITED.



WWW.BAIRD MOUNTS.COM

**UNLESS OTHERWISE SPECIFIED:**

DIMENSIONS ARE IN INCHES  
TOLERANCES:  
FRACTIONAL ±  
ANGULAR: MACH ± BEND ±  
TWO PLACE DECIMAL ±  
THREE PLACE DECIMAL ±

DO NOT SCALE DRAWING

**BAIRD MOUNTING SYSTEMS**

WATERLOO, IA 50703  
PHONE: 319-233-3561  
SALES@BAIRDMOUNTS.COM

**TITLE:**

VL4, TRIPLE TRAY, MAST, RUBBER MAT,  
PALLET

DRAWN BY  
JK

MATERIAL  
STEEL

DWG. PURPOSE  
INST

DATE  
09/01/20

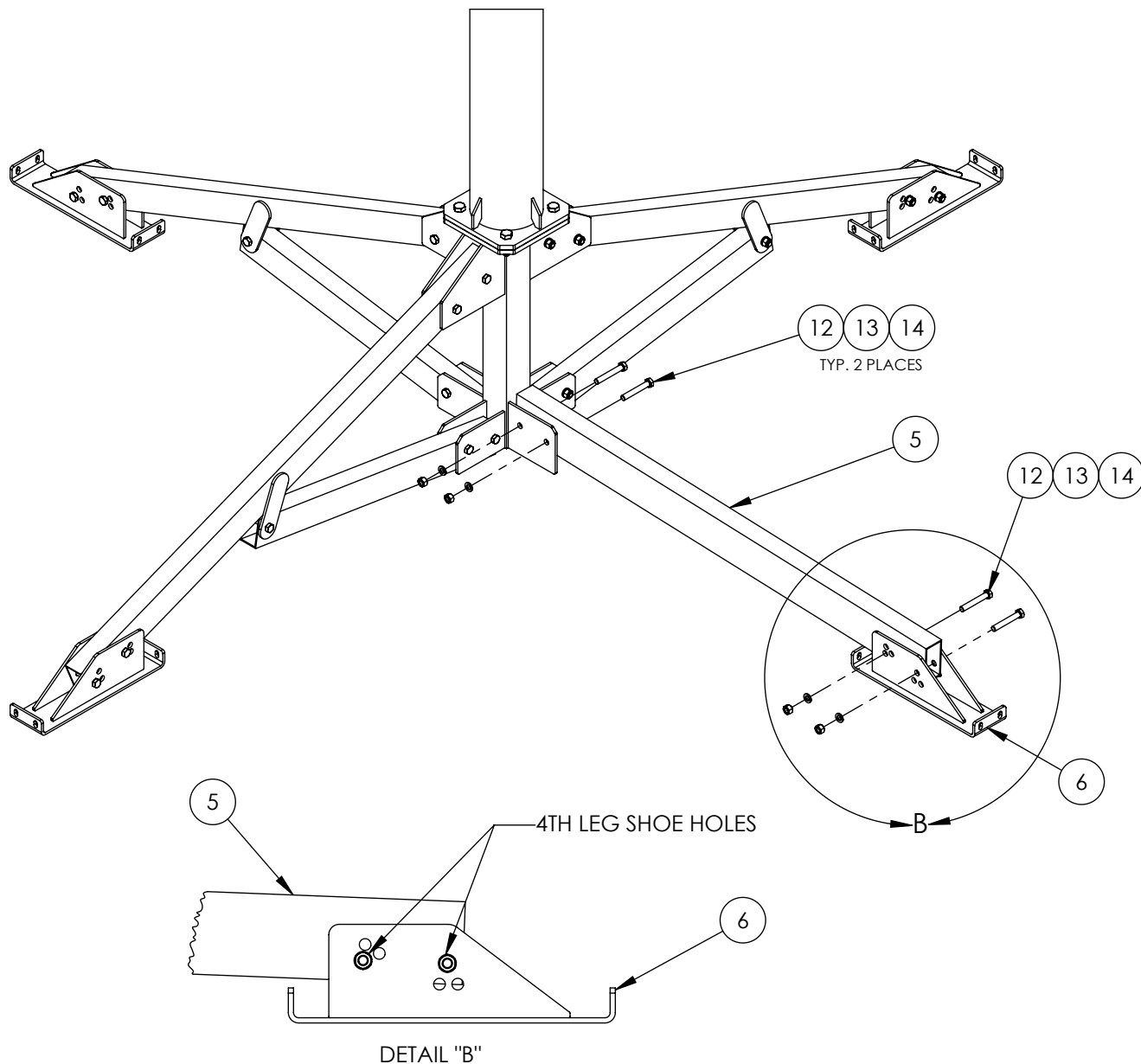
FINISH  
HDG

SHEET  
2

SCALE  
-

PART. NO.  
VL4-T-(000X0)-RP

DWG. NO.  
VL4-T-(000X0)-RP ASS'Y INST.



- Attach the 4th leg tube(#5) to the foot(#6) using (2) 1/2"x3-1/2" bolts, lockwashers and nuts. Detail "B" shows the holes to use in the foot assy. Note: the holes in the 4th leg tube are closer to the bottom edge of the tube when installed)
- Bolt the other end of the 4th leg tube(#5) to the large lower fins on the base(#1) using (2) 1/2"x3-1/2" bolts, lockwashers and nuts.
- Do not tighten hardware until assembly is complete and mount is in its final location.**

**PROPRIETARY AND CONFIDENTIAL**

THE INFORMATION CONTAINED IN THIS DRAWING IS THE SOLE PROPERTY OF BAIRD SUPPORTING SYSTEMS. ANY REPRODUCTION IN PART OR AS A WHOLE WITHOUT THE WRITTEN PERMISSION OF BAIRD SUPPORTING SYSTEMS IS PROHIBITED.



WWW.BAIRD MOUNTS.COM

**UNLESS OTHERWISE SPECIFIED:**

DIMENSIONS ARE IN INCHES  
TOLERANCES:  
FRACTIONAL ±  
ANGULAR: MACH ± BEND ±  
TWO PLACE DECIMAL ±  
THREE PLACE DECIMAL ±

DO NOT SCALE DRAWING

**BAIRD MOUNTING SYSTEMS**

WATERLOO, IA 50703  
PHONE: 319-233-3561  
SALES@BAIRDMOUNTS.COM

**TITLE:**

VL4, TRIPLE TRAY, MAST, RUBBER MAT,  
PALLET

DRAWN BY  
JK

MATERIAL  
STEEL

DWG. PURPOSE  
INST

DATE  
09/01/20

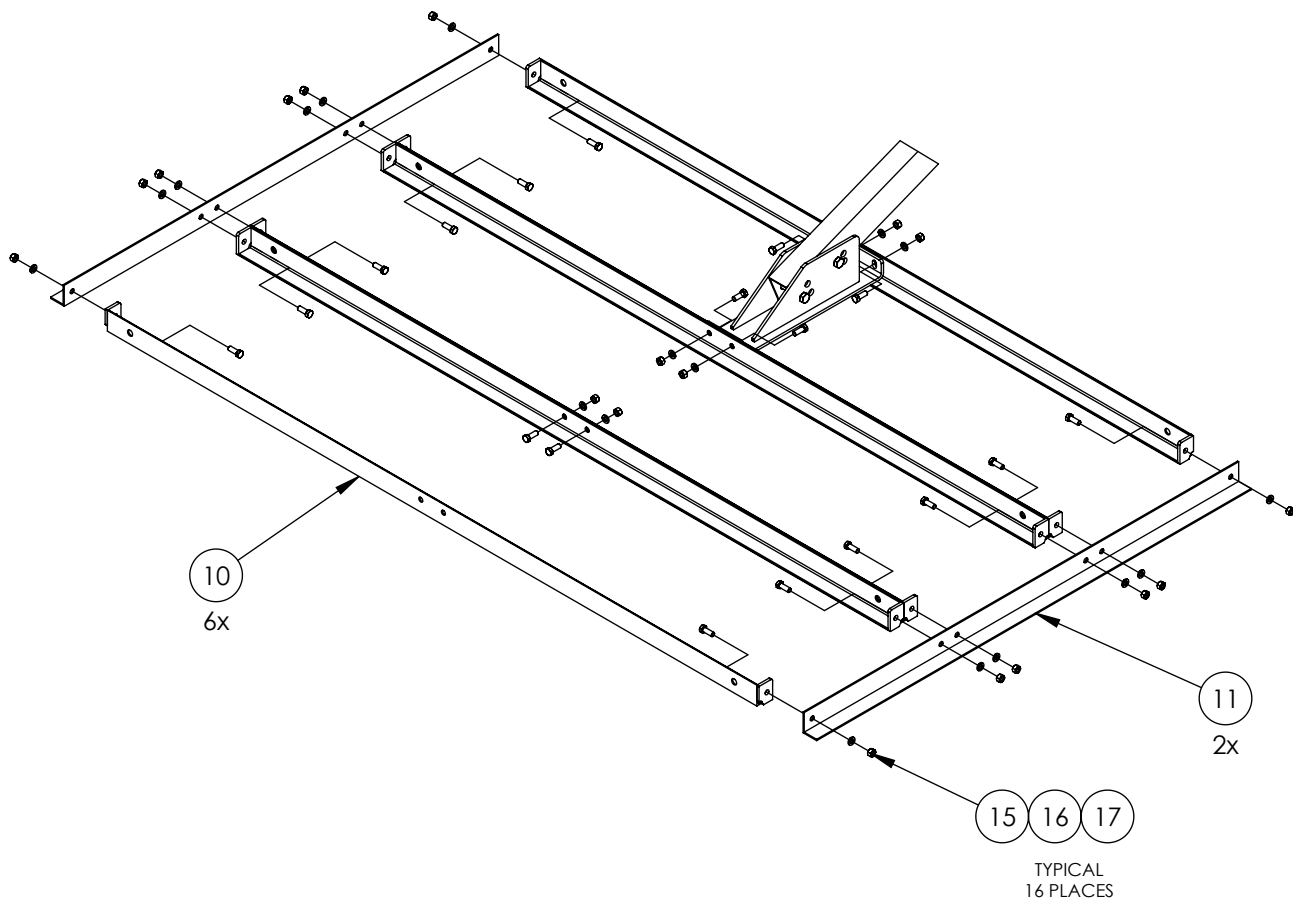
FINISH  
HDG

SHEET  
3

SCALE  
-

PART. NO.  
VL4-T-(000X0)-RP

DWG. NO.  
VL4-T-(000X0)-RP ASS'Y INST.



Assemble the ballast trays, as shown above, using six 6' ballast angles #10, two 48" side pads #11 and eighteen 3/8"x1" bolts/nuts/lockwashers. Repeat the process for each leg.

**PROPRIETARY AND CONFIDENTIAL**

THE INFORMATION CONTAINED IN THIS DRAWING IS THE SOLE PROPERTY OF BAIRD SUPPORTING SYSTEMS. ANY REPRODUCTION IN PART OR AS A WHOLE WITHOUT THE WRITTEN PERMISSION OF BAIRD SUPPORTING SYSTEMS IS PROHIBITED.



WWW.BAIRD MOUNTS.COM

**UNLESS OTHERWISE SPECIFIED:**

DIMENSIONS ARE IN INCHES  
TOLERANCES:  
FRACTIONAL ±  
ANGULAR: MACH ± BEND ±  
TWO PLACE DECIMAL ±  
THREE PLACE DECIMAL ±

DO NOT SCALE DRAWING

**BAIRD MOUNTING SYSTEMS**

WATERLOO, IA 50703  
PHONE: 319-233-3561  
SALES@BAIRD MOUNTS.COM

**TITLE:**

VL4, TRIPLE TRAY, MAST, RUBBER MAT,  
PALLET

DRAWN BY  
JK

MATERIAL  
STEEL

DWG. PURPOSE  
INST

DATE  
09/01/20

FINISH  
HDG

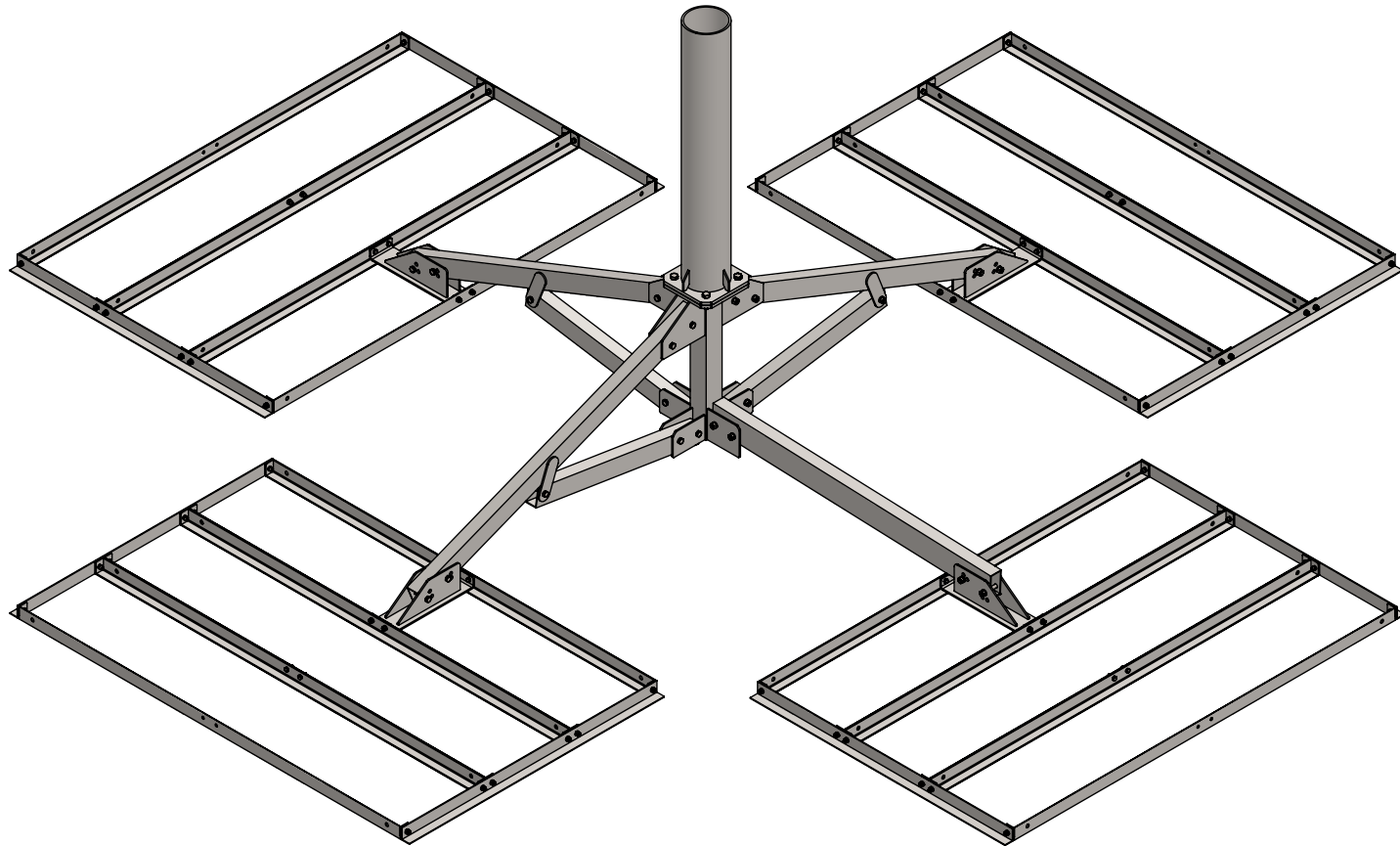
SHEET  
4

SCALE  
-

PART. NO.  
VL4-T-(000X0)-RP

DWG. NO.  
VL4-T-(000X0)-RP ASS'Y INST.

PART NO.	MAST DIAMETER	WEIGHT
VL4-T-662X35	6.62"OD	583 lbs.



**PROPRIETARY AND CONFIDENTIAL**  
THE INFORMATION CONTAINED IN THIS DRAWING IS THE SOLE PROPERTY OF BAIRD SUPPORTING SYSTEMS. ANY REPRODUCTION IN PART OR AS A WHOLE WITHOUT THE WRITTEN PERMISSION OF BAIRD SUPPORTING SYSTEMS IS PROHIBITED.



WWW.BAIRD MOUNTS.COM

UNLESS OTHERWISE SPECIFIED:  
DIMENSIONS ARE IN INCHES  
TOLERANCES:  
FRACTIONAL  $\pm$   
ANGULAR: MACH  $\pm$  BEND  $\pm$   
TWO PLACE DECIMAL  $\pm$   
THREE PLACE DECIMAL  $\pm$

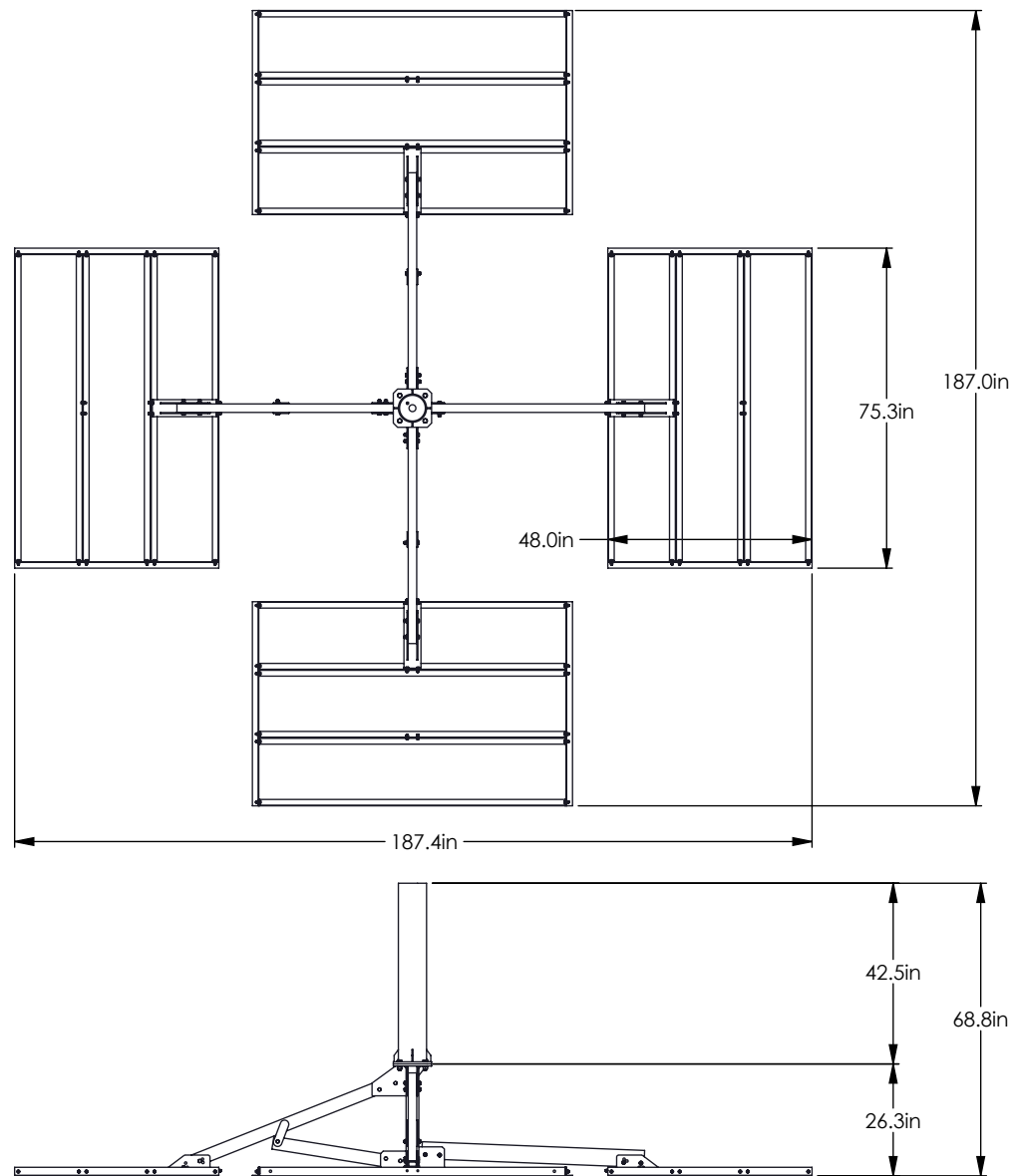
DO NOT SCALE DRAWING

### BAIRD MOUNTING SYSTEMS

WATERLOO, IA 50703  
PHONE: 319-233-3561  
SALES@BAIRD MOUNTS.COM

TITLE:  
VL4 MOUNT WITH TRIPLE TRAYS  
AND 3.5' MAST

DRAWN BY JK	DATE 04/20/18
MATERIAL STEEL	FINISH HDG
DWG. PURPOSE CUSTOMER	SHEET 1 OF 2
SCALE -	
PART. NO. SEE TABLE	
DWG. NO. VL4-T-(000)X35	



**PROPRIETARY AND CONFIDENTIAL**

THE INFORMATION CONTAINED IN THIS DRAWING IS THE SOLE PROPERTY OF BAIRD SUPPORTING SYSTEMS. ANY REPRODUCTION IN PART OR AS A WHOLE WITHOUT THE WRITTEN PERMISSION OF BAIRD SUPPORTING SYSTEMS IS PROHIBITED.



WWW.BAIRD MOUNTS.COM

**UNLESS OTHERWISE SPECIFIED:**

DIMENSIONS ARE IN INCHES  
TOLERANCES:  
FRACTIONAL  $\pm$   
ANGULAR: MACH  $\pm$  BEND  $\pm$   
TWO PLACE DECIMAL  $\pm$   
THREE PLACE DECIMAL  $\pm$

DO NOT SCALE DRAWING

**BAIRD MOUNTING SYSTEMS**

WATERLOO, IA 50703  
PHONE: 319-233-3561  
SALES@BAIRD MOUNTS.COM

TITLE:  
VL4 MOUNT WITH TRIPLE TRAYS  
AND 3.5' MAST

DRAWN BY JK	DATE 04/20/18
MATERIAL STEEL	FINISH HDG
DWG. PURPOSE CUSTOMER	SHEET 2 OF 2
PART. NO. SEE TABLE-SHEET 1	SCALE -
DWG. NO. VL4-T-(000)X35	