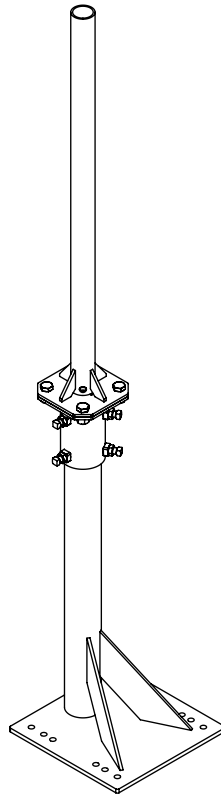


UORM-(000)X55-P



SYM.	PART #	DESCRIPTION	QTY.
1	AB1182-2.5(12ORM)HD	2.88'OD-2.5' ORM MAST,HDG	1
2	AB4999X.5(6)6H5HD	MAST ADAPTER 6"PLT (1/2" NUTS) , HDG	1
3	AS REQ'D	(XXX)"ODx3' MAST w/6"PLATE, HDG	1
4	H1-0500-125A325HDG	1/2"x1-1/4" BOLT A325, HDG	4
5	H2-0500HN2HHDG	1/2" NUT 2H , HDG	4
6	H4-0500LWHDG	1/2" LOCKWASHER, HDG	4
7	B5904-18	4"x4" ALUMINUM ANGLE 18" LONG	1
8	B5904-12	4"x4" ALUMINUM ANGLE 12" LONG	2
9	H7-0375-375JB-304S/S	3/8" x 3.75" J-BOLT, S/S	6
10	H3-0375FWSS	3/8" FLATWASHER, S/S	6
11	H2-0375HNSS	3/8" HEX NUT, S/S	12
12	H4-0375LWSS	3/8" LOCKWASHER, S/S	6
13	HUB-.37-150-HDG	3/8" DIA. x 1-1/2"W X 2-1/2"DP. UBOLT, HDG	2
14	HUB-.37-3.00-HDG	3/8" DIA. x 3"W x 3-5/8" DP. UBOLT, HDG	1
15	H2-0375HNHDG	3/8" HEX NUT, HDG	6
16	H3-0375FWHDG	3/8" FLATWASHER, HDG	6
17	H4-0375LWHDG	3/8" LOCKWASHER, HDG	6
18	74064	1/2"x1-1/2" SQ.HD. CUP POINT SET SCREW, SS	6
19	H2-0500HNSS	1/2" HEX NUT, SS	6
20		PALLET	1

PROPRIETARY AND CONFIDENTIAL

THE INFORMATION CONTAINED IN THIS DRAWING IS THE SOLE PROPERTY OF BAIRD SUPPORTING SYSTEMS. ANY REPRODUCTION IN PART OR AS A WHOLE WITHOUT THE WRITTEN PERMISSION OF BAIRD SUPPORTING SYSTEMS IS PROHIBITED.



WWW.BAIRD MOUNTS.COM

UNLESS OTHERWISE SPECIFIED:

DIMENSIONS ARE IN INCHES
 TOLERANCES:
 FRACTIONAL ±
 ANGULAR: MACH ± BEND ±
 TWO PLACE DECIMAL ±
 THREE PLACE DECIMAL ±

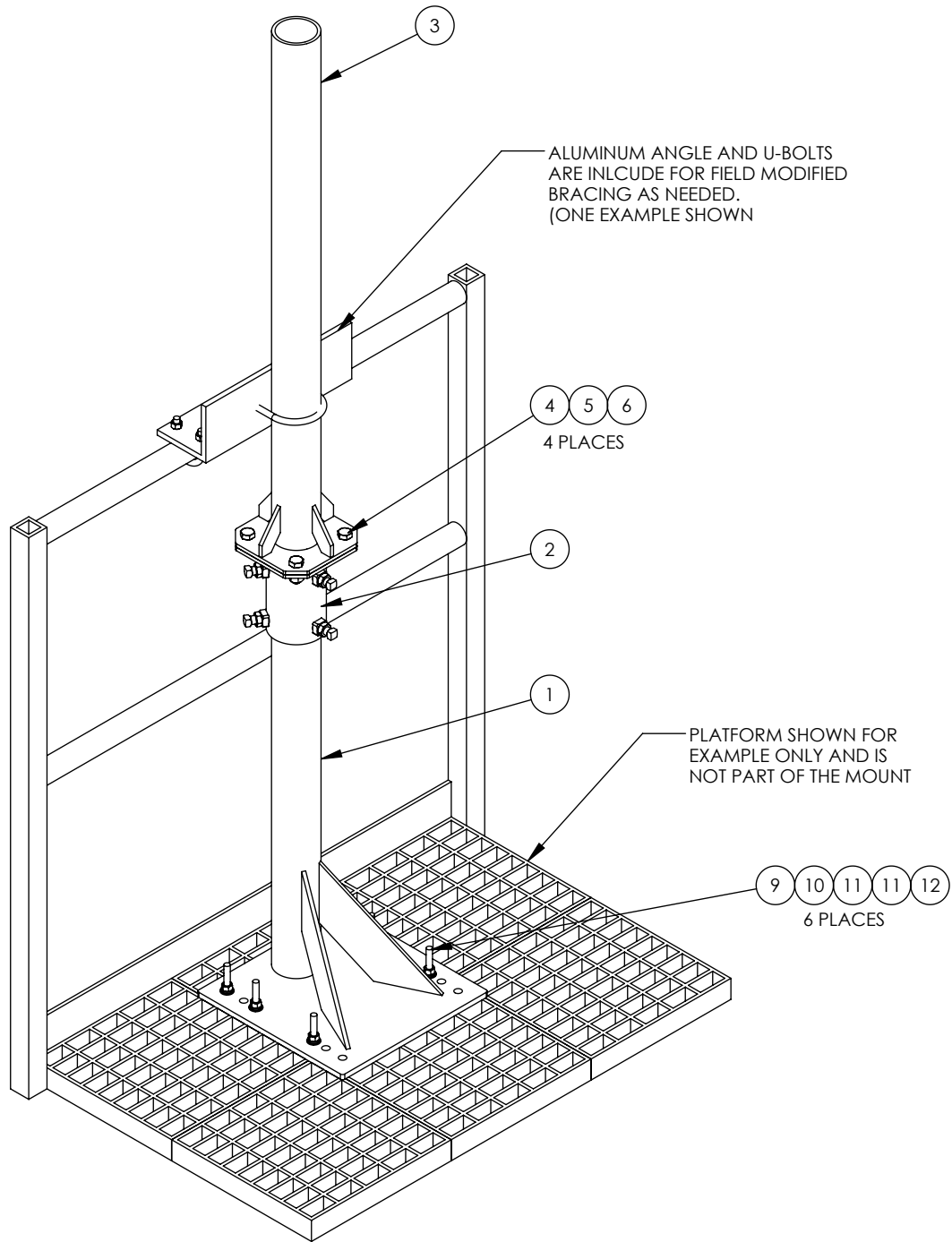
DO NOT SCALE DRAWING

BAIRD MOUNTING SYSTEMS

WATERLOO, IA 50703
 PHONE: 319-233-3561
 SALES@BAIRDMOUNTS.COM

TITLE:
 UNIVERSAL OIL RIG MOUNT -5.5' TALL

DRAWN BY JK	DATE 06/24/20
MATERIAL -	FINISH -
DWG. PURPOSE INSTRUCTION	SHEET 1
PART. NO. -	SCALE -
DWG. NO. UORM-(000)X55-P	



PROPRIETARY AND CONFIDENTIAL

THE INFORMATION CONTAINED IN THIS DRAWING IS THE SOLE PROPERTY OF BAIRD SUPPORTING SYSTEMS. ANY REPRODUCTION IN PART OR AS A WHOLE WITHOUT THE WRITTEN PERMISSION OF BAIRD SUPPORTING SYSTEMS IS PROHIBITED.



WWW.BAIRD MOUNTS.COM

UNLESS OTHERWISE SPECIFIED:

DIMENSIONS ARE IN INCHES
TOLERANCES:
FRACTIONAL ±
ANGULAR: MACH ± BEND ±
TWO PLACE DECIMAL ±
THREE PLACE DECIMAL ±

DO NOT SCALE DRAWING

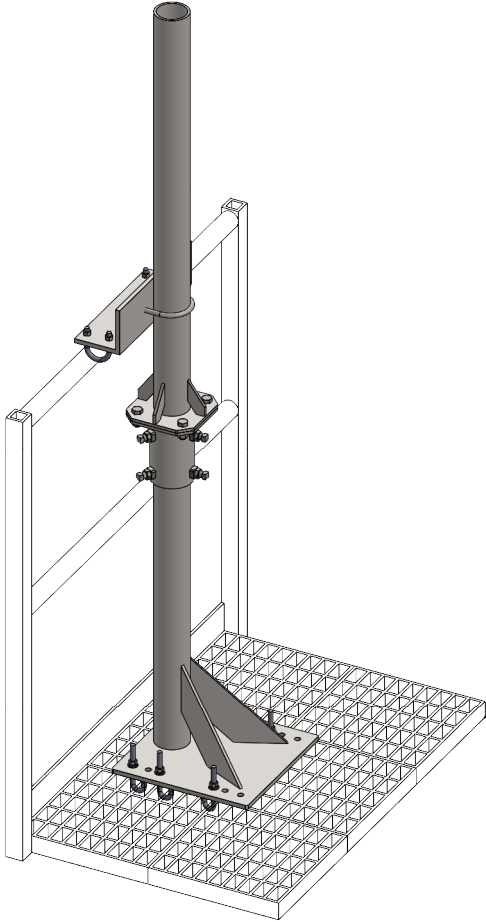
BAIRD MOUNTING SYSTEMS

WATERLOO, IA 50703
PHONE: 319-233-3561
SALES@BAIRDMOUNTS.COM

TITLE:
UNIVERSAL OIL RIG MOUNT-5.5' TALL

DRAWN BY JK	DATE 06/24/20	
MATERIAL -	FINISH -	
DWG. PURPOSE INSTRUCTION	SHEET 2	SCALE -
PART. NO. -		
DWG. NO. UORM-(000)X55-P		

PART NO.	MAST DIAMETER	WEIGHT
UORM-237X55	2.37"OD	69 lbs.
UORM-288X55	2.88"OD	76 lbs.



PARTIAL PLATROFM AND HANDRAIL SHOWN FOR EXAMPLE ONLY AND IS NOT PART OF THE MOUNT.

PROPRIETARY AND CONFIDENTIAL
 THE INFORMATION CONTAINED IN THIS DRAWING IS THE SOLE PROPERTY OF BAIRD SUPPORTING SYSTEMS. ANY REPRODUCTION IN PART OR AS A WHOLE WITHOUT THE WRITTEN PERMISSION OF BAIRD SUPPORTING SYSTEMS IS PROHIBITED.



WWW.BAIRD MOUNTS.COM

UNLESS OTHERWISE SPECIFIED:
 DIMENSIONS ARE IN INCHES
 TOLERANCES:
 FRACTIONAL ±
 ANGULAR: MACH ± BEND ±
 TWO PLACE DECIMAL ±
 THREE PLACE DECIMAL ±

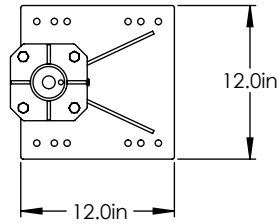
DO NOT SCALE DRAWING

BAIRD MOUNTING SYSTEMS

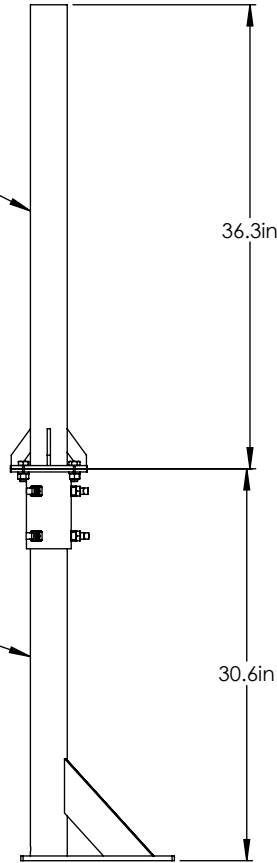
WATERLOO, IA 50703
 PHONE: 319-233-3561
 SALES@BAIRD MOUNTS.COM

DESCRIPTION:
 UNIVERSAL OIL RIG MOUNT

DRAWN BY JK	DATE 6/14/13	
MATERIAL STEEL	FINISH HDG	
DWG. PURPOSE CUSTOMER	SHEET 1 OF 2	SCALE -
PART. NO. SEE TABLE		
DWG. NO. UORM-(000)X55		



UPPER MAST
DIAMETER PER P/N



BOTTOM MAST
2.88"OD(S40) PIPE

PROPRIETARY AND CONFIDENTIAL
THE INFORMATION CONTAINED IN THIS DRAWING IS THE SOLE PROPERTY OF BAIRD SUPPORTING SYSTEMS. ANY REPRODUCTION IN PART OR AS A WHOLE WITHOUT THE WRITTEN PERMISSION OF BAIRD SUPPORTING SYSTEMS IS PROHIBITED.



WWW.BAIRD MOUNTS.COM

UNLESS OTHERWISE SPECIFIED:
DIMENSIONS ARE IN INCHES
TOLERANCES:
FRACTIONAL ±
ANGULAR: MACH ± BEND ±
TWO PLACE DECIMAL ±
THREE PLACE DECIMAL ±

DO NOT SCALE DRAWING

BAIRD MOUNTING SYSTEMS

WATERLOO, IA 50703
PHONE: 319-233-3561
SALES@BAIRDMOUNTS.COM

DESCRIPTION:
UNIVERSAL OIL RIG MOUNT

DRAWN BY JK	DATE 6/14/13	
MATERIAL STEEL	FINISH HDG	
DWG. PURPOSE CUSTOMER	SHEET 2OF2	SCALE 1:15

PART. NO.
SEE TABLE-SHEET 1

DWG. NO.
UORM-(000)X55