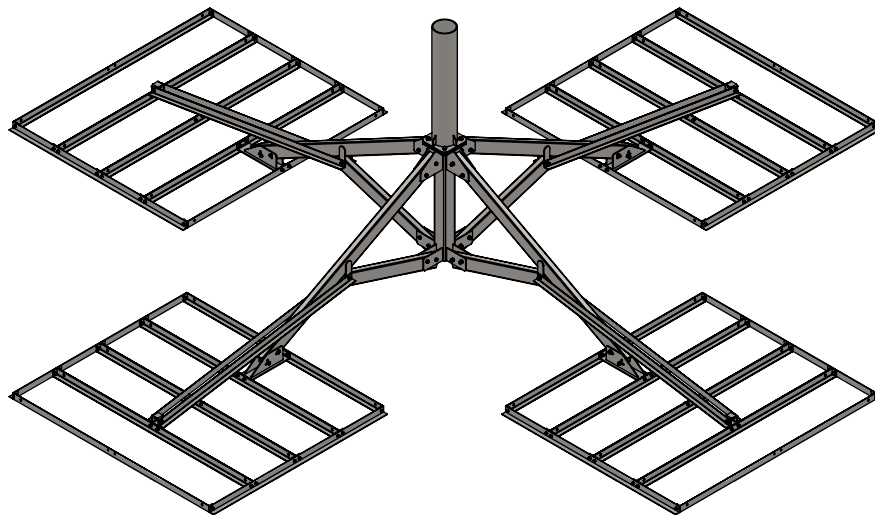


PX-Q-(000X0)-RP



SYM	PART#	DESCRIPTION	QTY.
1	AB1515(9)HD	PXL-2 BASE ASS'Y, HDG	1
2	AS REQ'D	X.XX"OD xX' MAST w/9" PLT, HDG	1
3	AB1516HD	PXL-2 ARM ASS'Y, HDG	4
4	AB1145HD	PXL-2 BRACE TUBE, HDG	4
5	AB1756HD	FOOT ASS'Y, HDG	4
6	AB1119BHD	6' BALLAST ANGLE, HDG	32
7	AB1098HD	QUAD TRAY SIDE PAD (64"), HDG	8
8	H1-0625-200GR8	5/8"x 2" BOLT GR.8, Z/P	4
9	H4-0625LW	5/8" SPLIT LOCKWASHER, Z/P	4
10	H2-0625HN	5/8" NUT, Z/P	4
11	H1-0500-350	1/2" x 3-1/2" BOLT GR.5, Z/P	28+4
12	H4-0500LW	1/2" SPLIT LOCKWASHER, Z/P	28+4
13	H2-0500HN	1/2" NUT, Z/P	28+4
14	H1-0375-100	3/8" x 1" BOLT GR.5, Z/P	96
15	H4-0375LW	3/8" SPLIT LOCKWASHER, Z/P	96
16	H2-0375HN	3/8" NUT, Z/P	96
17	AB1148HD	STABILIZER BRACKET, HDG	4
18	B1147-C1HD	STABILIZER ANGLE, HDG	8
		RUBBER PAD 32"x77"	8
		PALLET	1

HDWE-
28X350
+QTY.4

HDWE-BT
QTY.6

PROPRIETARY AND CONFIDENTIAL

THE INFORMATION CONTAINED IN THIS DRAWING IS THE SOLE PROPERTY OF BAIRD SUPPORTING SYSTEMS. ANY REPRODUCTION IN PART OR AS A WHOLE WITHOUT THE WRITTEN PERMISSION OF BAIRD SUPPORTING SYSTEMS IS PROHIBITED.



WWW.BAIRD MOUNTS.COM

UNLESS OTHERWISE SPECIFIED:

DIMENSIONS ARE IN INCHES
TOLERANCES:
FRACTIONAL ±
ANGULAR: MACH ± BEND ±
TWO PLACE DECIMAL ±
THREE PLACE DECIMAL ±

DO NOT SCALE DRAWING

BAIRD MOUNTING SYSTEMS

WATERLOO, IA 50703
PHONE: 319-233-3561
SALES@BAIRDMOUNTS.COM

TITLE:
PXL2, QUAD TRAY, MAST, RUBBER PAD

DRAWN BY
JK

MATERIAL
STEEL

DWG. PURPOSE
INST

DATE
11/23/21

FINISH
HDG

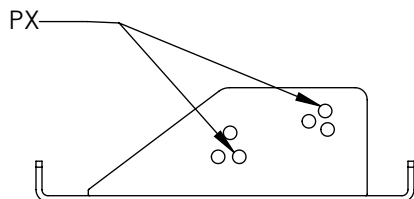
SHEET
1

SCALE
-

PART. NO.
PX-Q-(000X0)-RP

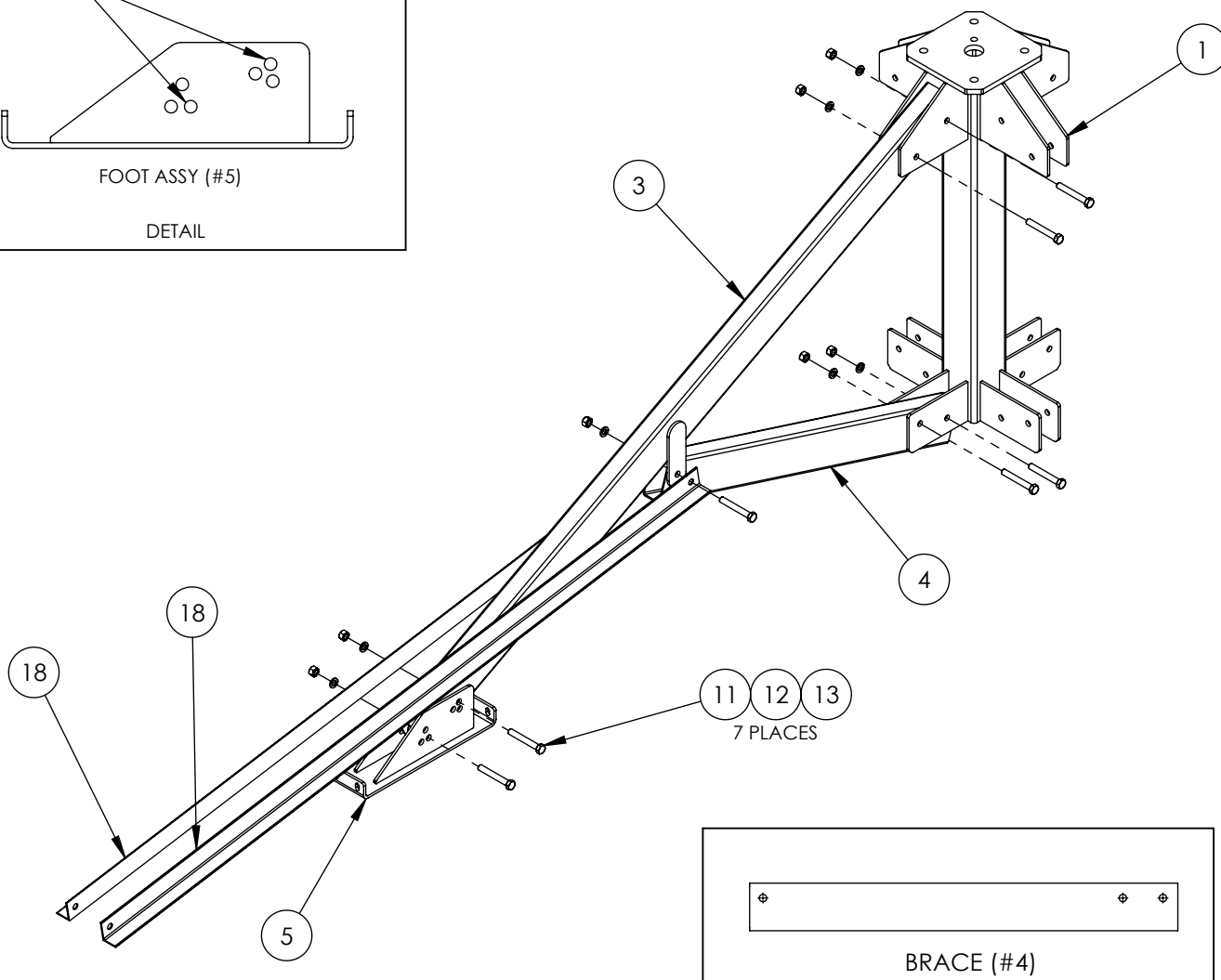
DWG. NO.
PX-Q-(000X0)-RP ASSY INST

REV. 08/2022



FOOT ASSY (#5)

DETAIL



LOCATE A 72" ARM ASS'Y(#3). WITH THE TABS POINTING DOWNWARD AND AWAY FROM THE BASE, ATTACH TO THE UPPER FINS WITH (2) 1/2"x3-1/2" BOLTS, LOCKWASHERS & NUTS. (DO NOT TIGHTEN ANY HARDWARE UNTIL THE ASSEMBLY IS COMPLETE AND MOUNT IS IN ITS FINAL POSITION.)

NEXT, ATTACH THE 36" BRACE TUBE(#4) TO THE LOWER FINS WITH (2) 1/2"x3-1/2" BOLTS, LOCKWASHERS & NUTS, AS SHOWN IN THE ABOVE DIAGRAM. NEXT, ATTACH THE OTHER END OF THE BRACE TUBE(#4) & THE TWO STABILIZER ANGLES(#18) TO THE TABS ON THE 72" ARM(#3) USING (1) 1/2"x3-1/2" BOLT, LOCKWASHER & NUT. NOTE, THE SINGLE HOLE ON THE BRACE TUBE SHOULD BE TOWARDS THE TOP OF THE TUBE.

ATTACH THE FOOT (#5) TO THE END OF THE PXL2 ARM, USING (2) 1/2"x3-1/2" BOLTS, LOCKWASHERS AND NUTS.

REPEAT THE PREVIOUS STEPS FOR THE THREE REMAINING SIDES. DO NOT TIGHTEN HARDWARE UNTIL COMPLETE MOUNT IS ASSEMBLED AND PLACED IN ITS FINAL LOCATION.

PROPRIETARY AND CONFIDENTIAL

THE INFORMATION CONTAINED IN THIS DRAWING IS THE SOLE PROPERTY OF BAIRD SUPPORTING SYSTEMS. ANY REPRODUCTION IN PART OR AS A WHOLE WITHOUT THE WRITTEN PERMISSION OF BAIRD SUPPORTING SYSTEMS IS PROHIBITED.



WWW.BAIRD MOUNTS.COM

UNLESS OTHERWISE SPECIFIED:

DIMENSIONS ARE IN INCHES
TOLERANCES:
FRACTIONAL ±
ANGULAR: MACH ± BEND ±
TWO PLACE DECIMAL ±
THREE PLACE DECIMAL ±

DO NOT SCALE DRAWING

BAIRD MOUNTING SYSTEMS

WATERLOO, IA 50703
PHONE: 319-233-3561
SALES@BAIRDMOUNTS.COM

TITLE:
PXL2, QUAD TRAY, MAST, RUBBER PAD

DRAWN BY
JK

MATERIAL
STEEL

DWG. PURPOSE
INST

DATE
11/23/21

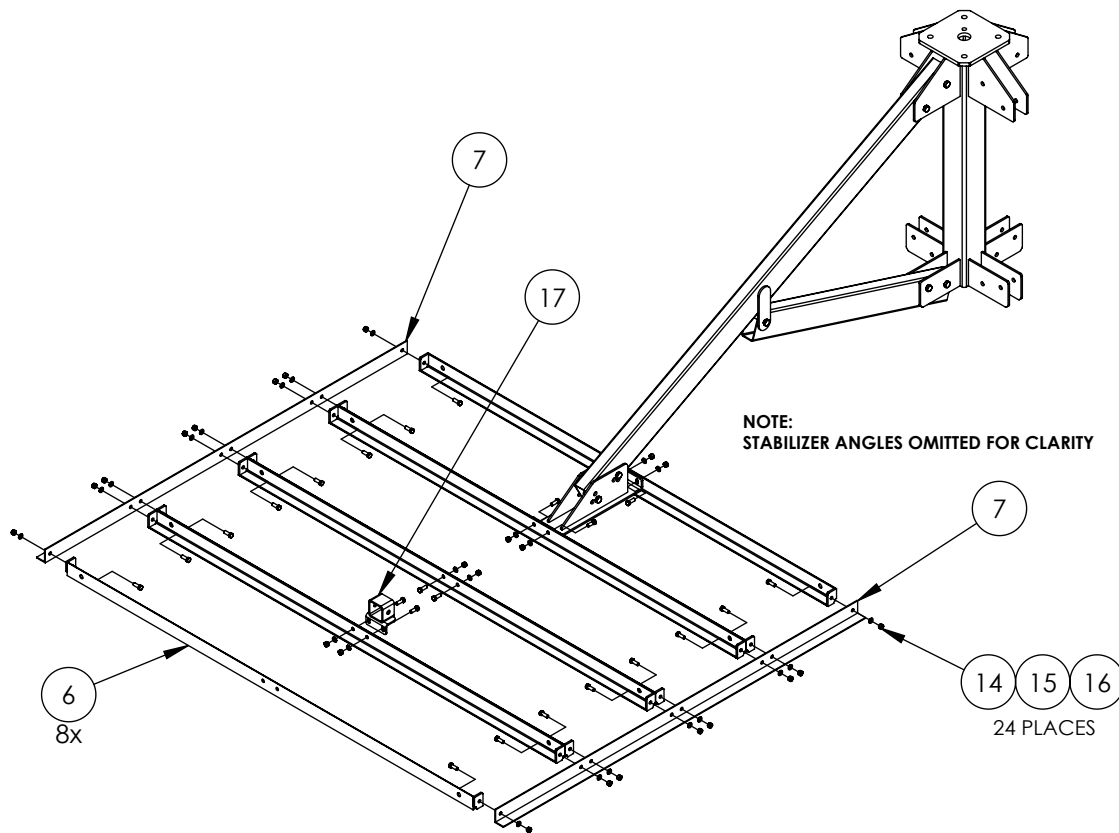
FINISH
HDG

SHEET
2

SCALE
-

PART. NO.
PX-Q-(000X0)-RP

DWG. NO.
PX-Q-(000X0)-RP ASSY INST



ASSEMBLE A BALLAST TRAY AND ATTACH TO THE FOOT ASSY, AS SHOWN ABOVE. USE EIGHT 6' BALLAST ANGLES(#6), TWO QUAD TRAY SIDE PADS(#7)AND TWENTY-FOUR 3/8"x1" BOLTS, LOCKWASHERS & NUTS. SEE THE DRAWING SHOWN ABOVE. REPEAT FOR THE REMAINING THREE BALLAST TRAYS.

ATTACH THE MAST TO THE BASE USING FOUR 5/8"x2" BOLTS, LOCKWASHERS AND NUTS(#8,#9,#10)

PROPRIETARY AND CONFIDENTIAL

THE INFORMATION CONTAINED IN THIS DRAWING IS THE SOLE PROPERTY OF BAIRD SUPPORTING SYSTEMS. ANY REPRODUCTION IN PART OR AS A WHOLE WITHOUT THE WRITTEN PERMISSION OF BAIRD SUPPORTING SYSTEMS IS PROHIBITED.



WWW.BAIRD MOUNTS.COM

UNLESS OTHERWISE SPECIFIED:

DIMENSIONS ARE IN INCHES
TOLERANCES:
FRACTIONAL ±
ANGULAR: MACH ± BEND ±
TWO PLACE DECIMAL ±
THREE PLACE DECIMAL ±

DO NOT SCALE DRAWING

BAIRD MOUNTING SYSTEMS

WATERLOO, IA 50703
PHONE: 319-233-3561
SALES@BAIRDMOUNTS.COM

TITLE:
PXL2, QUAD TRAY, MAST, RUBBER PAD

DRAWN BY
JK

MATERIAL
STEEL

DWG. PURPOSE
INST

DATE
11/23/21

FINISH
HDG

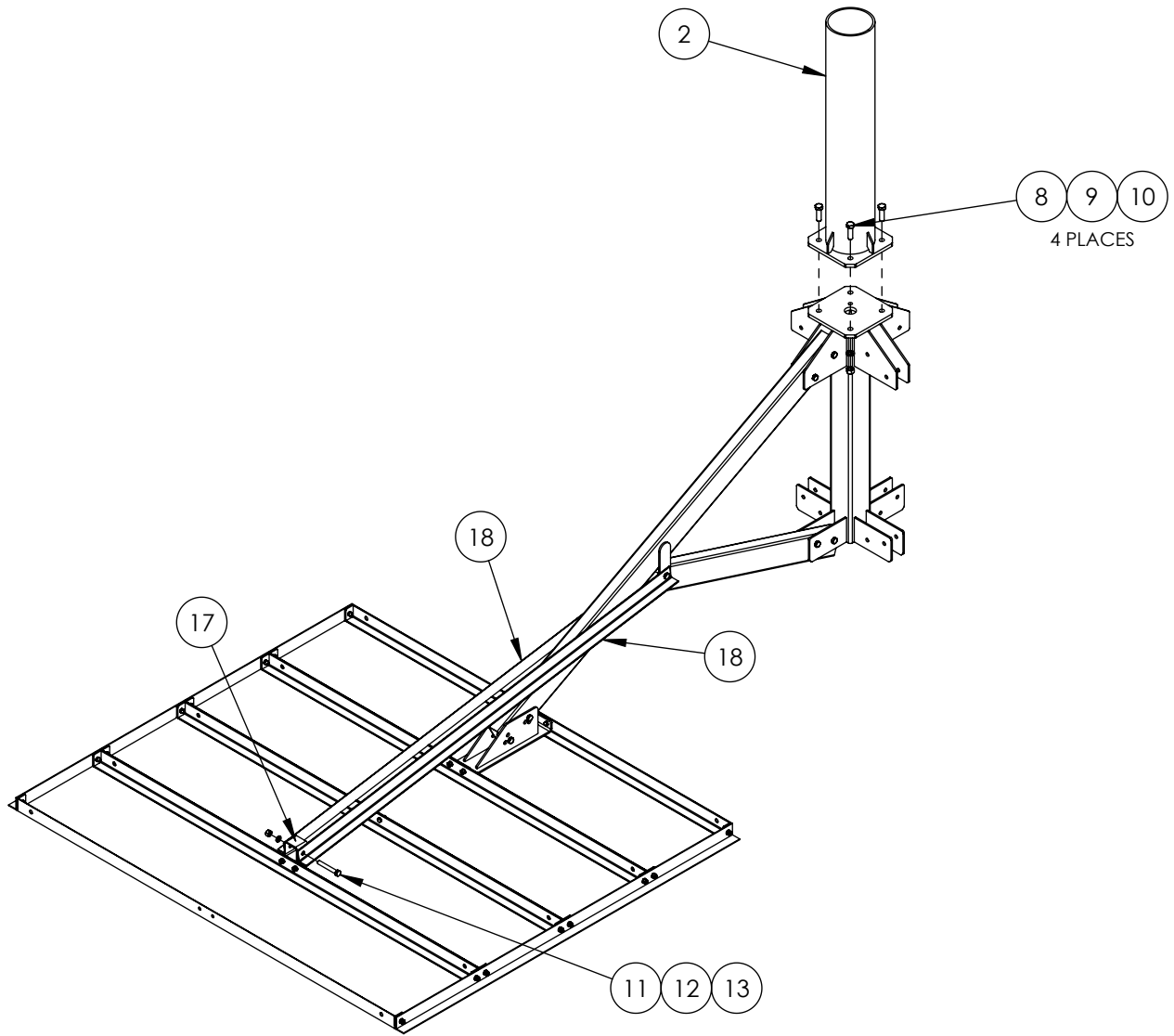
SHEET
3

SCALE
-

PART. NO.
PX-Q-(000X0)-RP

DWG. NO.
PX-Q-(000X0)-RP ASSY INST

REV. 08/2022



ATTACH THE STABILIZER ANGLES(# 18) TO THE MOUNTING BRACKET(#17) WITH A 1/2"x3-1/2" BOLT, LOCKWASHER AND NUT(#11,#12,#13).

ATTACH THE MAST TO THE BASE USING FOUR 5/8"x2" BOLTS, LOCKWASHERS AND NUTS(#8,#9,#10)

PROPRIETARY AND CONFIDENTIAL

THE INFORMATION CONTAINED IN THIS DRAWING IS THE SOLE PROPERTY OF BAIRD SUPPORTING SYSTEMS. ANY REPRODUCTION IN PART OR AS A WHOLE WITHOUT THE WRITTEN PERMISSION OF BAIRD SUPPORTING SYSTEMS IS PROHIBITED.



WWW.BAIRD MOUNTS.COM

UNLESS OTHERWISE SPECIFIED:

DIMENSIONS ARE IN INCHES
TOLERANCES:
FRACTIONAL ±
ANGULAR: MACH ± BEND ±
TWO PLACE DECIMAL ±
THREE PLACE DECIMAL ±

DO NOT SCALE DRAWING

BAIRD MOUNTING SYSTEMS

WATERLOO, IA 50703
PHONE: 319-233-3561
SALES@BAIRDMOUNTS.COM

TITLE:
PXLL2, QUAD TRAY, MAST, RUBBER PAD

DRAWN BY
JK

MATERIAL
STEEL

DWG. PURPOSE
INST

DATE
11/23/21

FINISH
HDG

SHEET
3

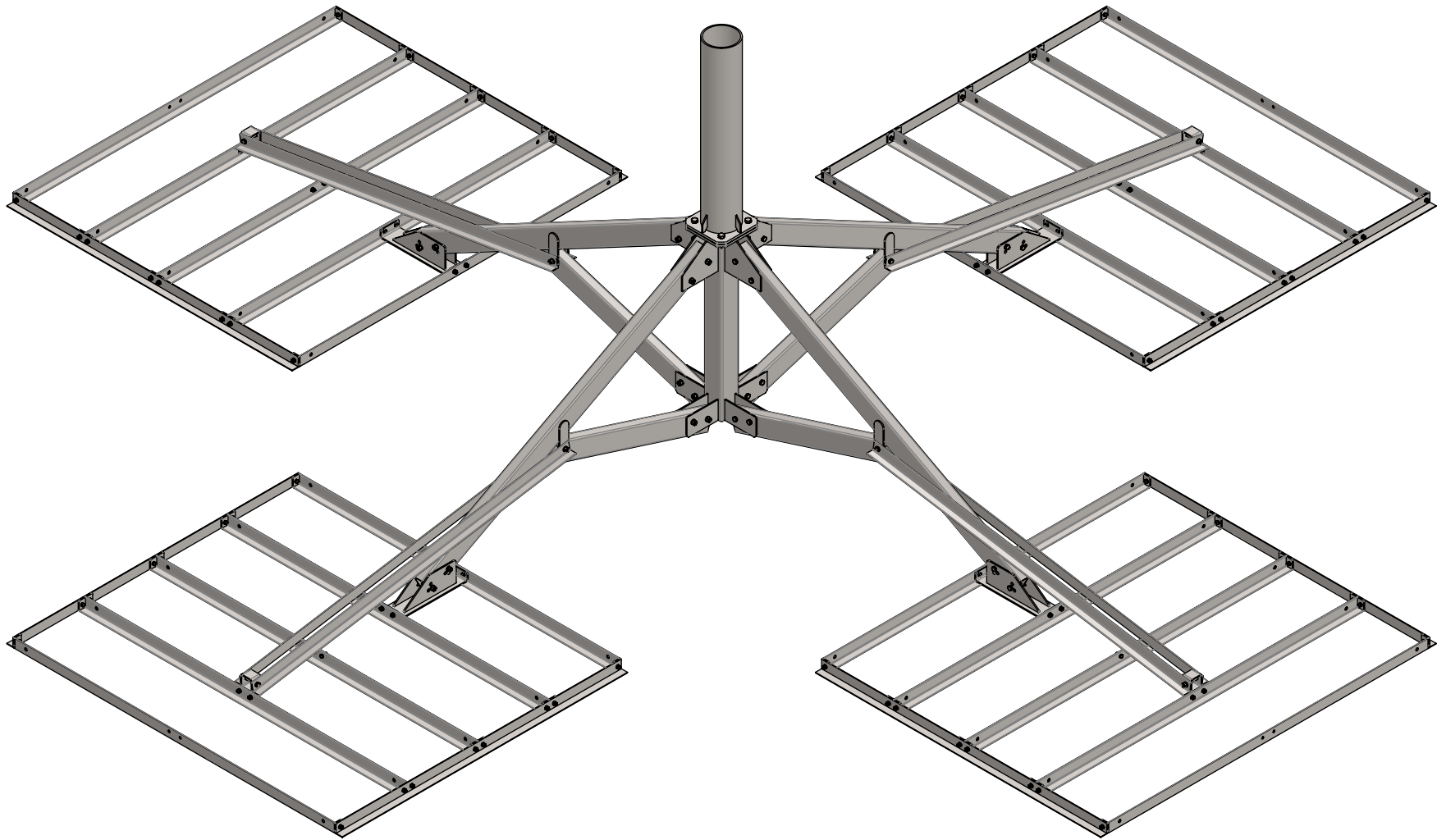
SCALE
-

PART. NO.
PX-Q-(000X0)-RP

DWG. NO.
PX-Q-(000X0)-RP ASSY INST

REV. 08/2022

PART NO.	MAST DIAMETER	WEIGHT
PX-Q-550X3	5.50"OD	816 lbs.
PX-Q-556X3	5.56"OD	797 lbs.
PX-Q-662X3	6.62"OD	811 lbs.



PROPRIETARY AND CONFIDENTIAL

THE INFORMATION CONTAINED IN THIS DRAWING IS THE SOLE PROPERTY OF BAIRD SUPPORTING SYSTEMS. ANY REPRODUCTION IN PART OR AS A WHOLE WITHOUT THE WRITTEN PERMISSION OF BAIRD SUPPORTING SYSTEMS IS PROHIBITED.



WWW.BAIRDMOUNTS.COM

UNLESS OTHERWISE SPECIFIED:

DIMENSIONS ARE IN INCHES
TOLERANCES:
FRACTIONAL ±
ANGULAR: MACH ± BEND ±
TWO PLACE DECIMAL ±
THREE PLACE DECIMAL ±

DO NOT SCALE DRAWING

BAIRD MOUNTING SYSTEMS

WATERLOO, IA 50703
PHONE: 319-233-3561
SALES@BAIRDMOUNTS.COM

TITLE:

PXL-2, QUAD TRAY WITH 3' MAST

DRAWN BY
JK

MATERIAL
STEEL

DWG. PURPOSE
CUSTOMER

DATE
01/10/2021

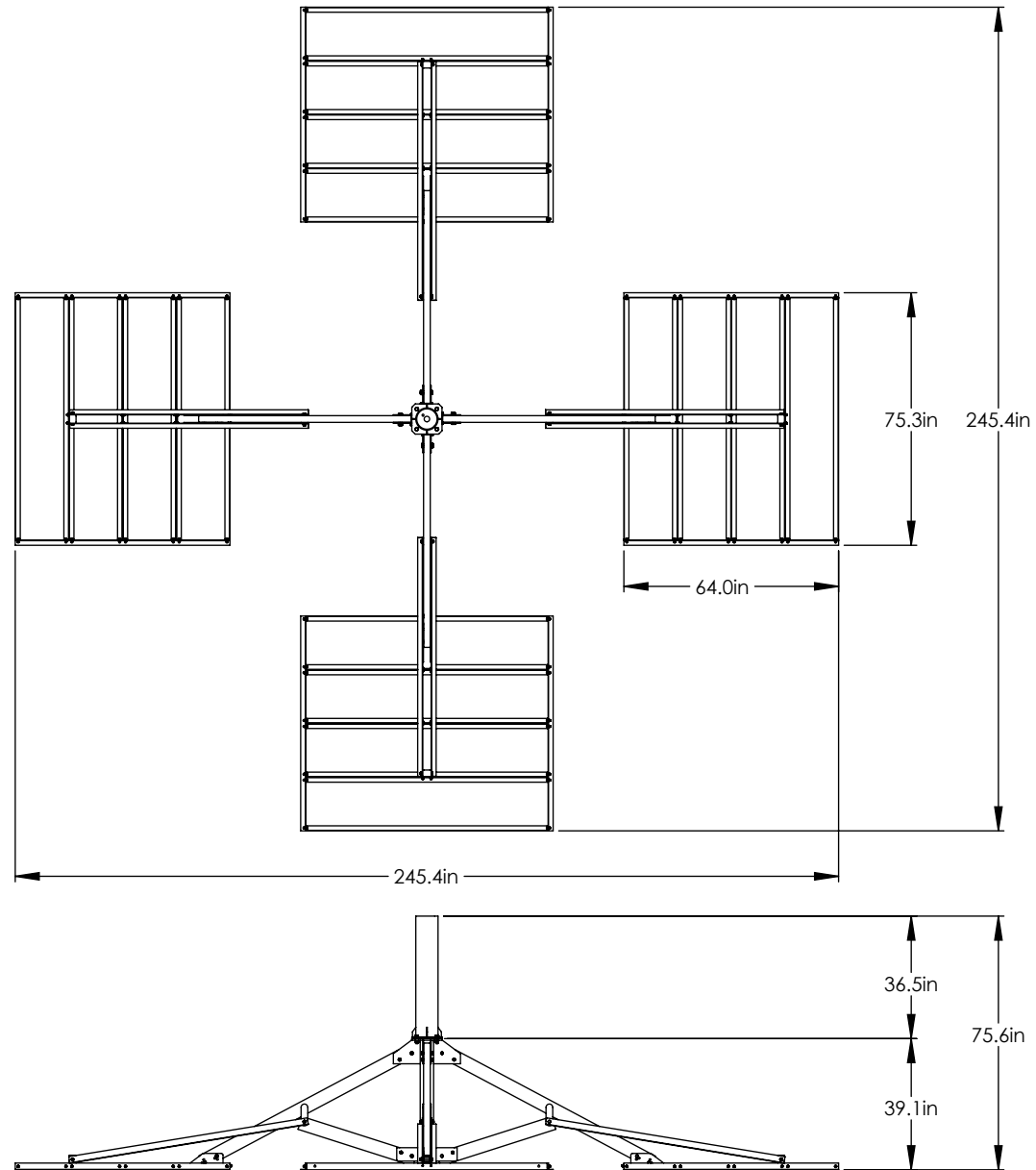
FINISH
HDG

SHEET
1 OF 2

SCALE
-

PART. NO.
SEE TABLE

DWG. NO.
PX-Q-(000)X3



PROPRIETARY AND CONFIDENTIAL

THE INFORMATION CONTAINED IN THIS DRAWING IS THE SOLE PROPERTY OF BAIRD SUPPORTING SYSTEMS. ANY REPRODUCTION IN PART OR AS A WHOLE WITHOUT THE WRITTEN PERMISSION OF BAIRD SUPPORTING SYSTEMS IS PROHIBITED.



WWW.BAIRDMOUNTS.COM

UNLESS OTHERWISE SPECIFIED:

DIMENSIONS ARE IN INCHES
TOLERANCES:
FRACTIONAL \pm
ANGULAR: MACH \pm BEND \pm
TWO PLACE DECIMAL \pm
THREE PLACE DECIMAL \pm

DO NOT SCALE DRAWING

BAIRD MOUNTING SYSTEMS

WATERLOO, IA 50703
PHONE: 319-233-3561
SALES@BAIRDMOUNTS.COM

TITLE:

PXL-2, QUAD TRAYS WITH 3' MAST

DRAWN BY JK	DATE 01/10/21
MATERIAL STEEL	FINISH HDG
DWG. PURPOSE CUSTOMER	SHEET 2OF2
PART. NO. SEE TABLE- SHEET 1	SCALE -
DWG. NO. PX-Q-(000)x3	