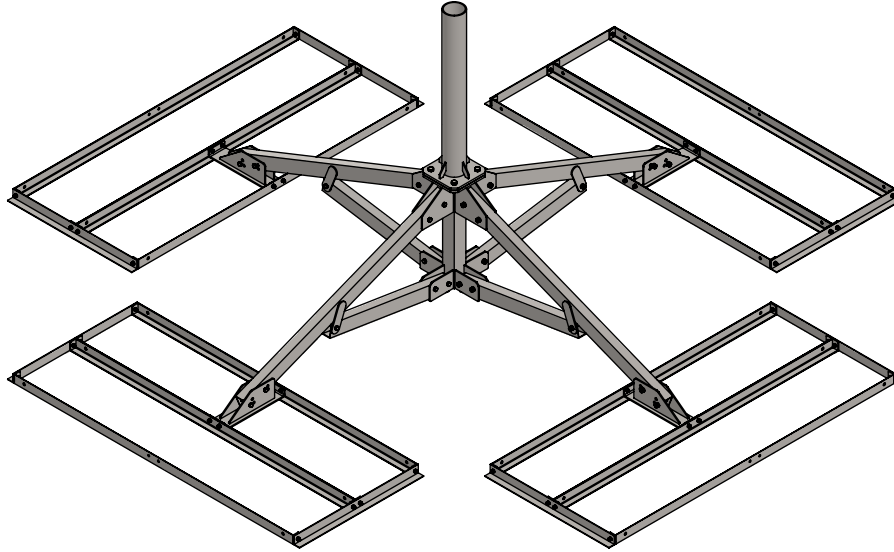


PL2-D-(000X0)-RP



SYM	PART#	DESCRIPTION	QTY.	
1	AB1511(1/2X9)H	PL-2 BASE ASS'Y, HDG	1	
2	AS REQ'D	X.XX"OD xX' MAST w/9" PLT, HDG	1	
3	AB1512AHD	PL2/VL4 ARM ASS'Y, HDG	4	
4	AB1136AHD	PL2/VL4 BRACE TUBE, HDG	4	
5	AB1756HD	FOOT ASS'Y, HDG	4	
6	AB1119BHD	6' BALLAST ANGLE, HDG	16	
7	AB1127BHD	DOUBLE TRAY SIDE PAD (32"), HDG	8	
8	H1-0625-200GR8	5/8"x 2" BOLT GR.8, Z/P	4	
9	H4-0625LW	5/8" SPLIT LOCKWASHER, Z/P	4	
10	H2-0625HN	5/8" NUT, Z/P	4	
11	H1-0500-350	1/2" x 3-1/2" BOLT GR.5, Z/P	28	HDWE-28X350
12	H4-0500LW	1/2" SPLIT LOCKWASHER, Z/P	28	
13	H2-0500HN	1/2" NUT, Z/P	28	
14	H1-0375-100	3/8" x 1" BOLT GR.5, Z/P	48	HDWE-BT QTY.3
15	H4-0375LW	3/8" SPLIT LOCKWASHER, Z/P	48	
16	H2-0375HN	3/8" NUT, Z/P	48	
		RUBBER PAD 32"x77"	4	
		PALLET	1	

PROPRIETARY AND CONFIDENTIAL

THE INFORMATION CONTAINED IN THIS DRAWING IS THE SOLE PROPERTY OF BAIRD SUPPORTING SYSTEMS. ANY REPRODUCTION IN PART OR AS A WHOLE WITHOUT THE WRITTEN PERMISSION OF BAIRD SUPPORTING SYSTEMS IS PROHIBITED.



WWW.BAIRD MOUNTS.COM

UNLESS OTHERWISE SPECIFIED:

DIMENSIONS ARE IN INCHES
TOLERANCES:
FRACTIONAL ±
ANGULAR: MACH ± BEND ±
TWO PLACE DECIMAL ±
THREE PLACE DECIMAL ±

DO NOT SCALE DRAWING

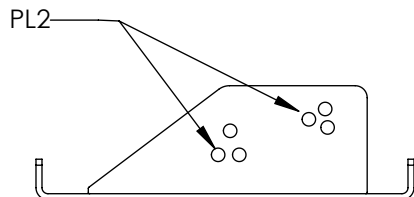
BAIRD MOUNTING SYSTEMS

WATERLOO, IA 50703
PHONE: 319-233-3561
SALES@BAIRDMOUNTS.COM

TITLE:
PL2, DOUBLE TRAY, MAST, RUBBER PAD

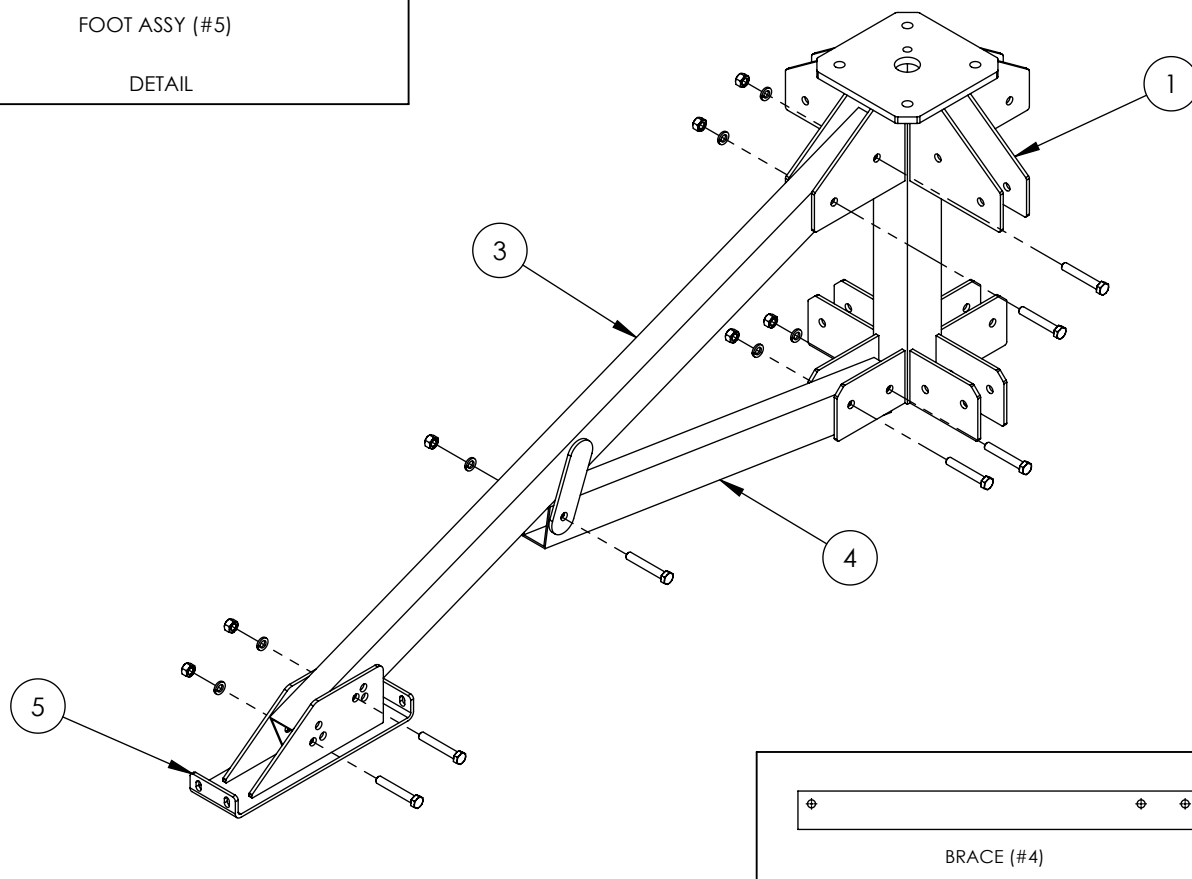
DRAWN BY JK	DATE 11/23/21
MATERIAL STEEL	FINISH HDG
DWG. PURPOSE INST	SHEET 1
	SCALE -
PART. NO. PL2-D-(000X0)-RP	
DWG. NO. PL2-D-(000X0)-RP ASSY INST	

REV. 08/2022



FOOT ASSY (#5)

DETAIL



BRACE (#4)

LOCATE A 56" ARM ASS'Y(#3). WITH THE TABS POINTING DOWNWARD AND AWAY FROM THE BASE, ATTACH TO THE UPPER FINS WITH (2) 1/2"x3-1/2" BOLTS, LOCKWASHERS & NUTS. (DO NOT TIGHTEN ANY HARDWARE UNTIL THE ASSEMBLY IS COMPLETE AND MOUNT IS IN ITS FINAL POSITION.)

NEXT, ATTACH THE 31" BRACE TUBE(#4) TO THE LOWER FINS WITH (2) 1/2"x3-1/2" BOLTS, LOCKWASHERS & NUTS, AS SHOWN IN THE ABOVE DIAGRAM. NEXT, ATTACH THE OTHER END OF THE BRACE TUBE TO THE TABS ON THE 56" ARM(#3) USING (1) 1/2"x3-1/2" BOLT, LOCKWASHER & NUT. NOTE, THE SINGLE HOLE ON THE BRACE TUBE SHOULD BE TOWARDS THE TOP OF THE TUBE.

ATTACH THE FOOT (#5) TO THE END OF THE PL2 ARM, USING (2) 1/2"x3-1/2" BOLTS, LOCKWASHERS AND NUTS.

REPEAT THE PREVIOUS STEPS FOR THE THREE REMAINING SIDES. DO NOT TIGHTEN HARDWARE UNTIL COMPLETE MOUNT IS ASSEMBLED AND PLACED IN ITS FINAL LOCATION.

PROPRIETARY AND CONFIDENTIAL

THE INFORMATION CONTAINED IN THIS DRAWING IS THE SOLE PROPERTY OF BAIRD SUPPORTING SYSTEMS. ANY REPRODUCTION IN PART OR AS A WHOLE WITHOUT THE WRITTEN PERMISSION OF BAIRD SUPPORTING SYSTEMS IS PROHIBITED.



WWW.BAIRDMOUNTS.COM

UNLESS OTHERWISE SPECIFIED:

DIMENSIONS ARE IN INCHES
TOLERANCES:
FRACTIONAL ±
ANGULAR: MACH ± BEND ±
TWO PLACE DECIMAL ±
THREE PLACE DECIMAL ±

DO NOT SCALE DRAWING

BAIRD MOUNTING SYSTEMS

WATERLOO, IA 50703
PHONE: 319-233-3561
SALES@BAIRDMOUNTS.COM

TITLE:
PL2, DOUBLE TRAY, MAST, RUBBER PAD

DRAWN BY
JK

MATERIAL
STEEL

DWG. PURPOSE
INST

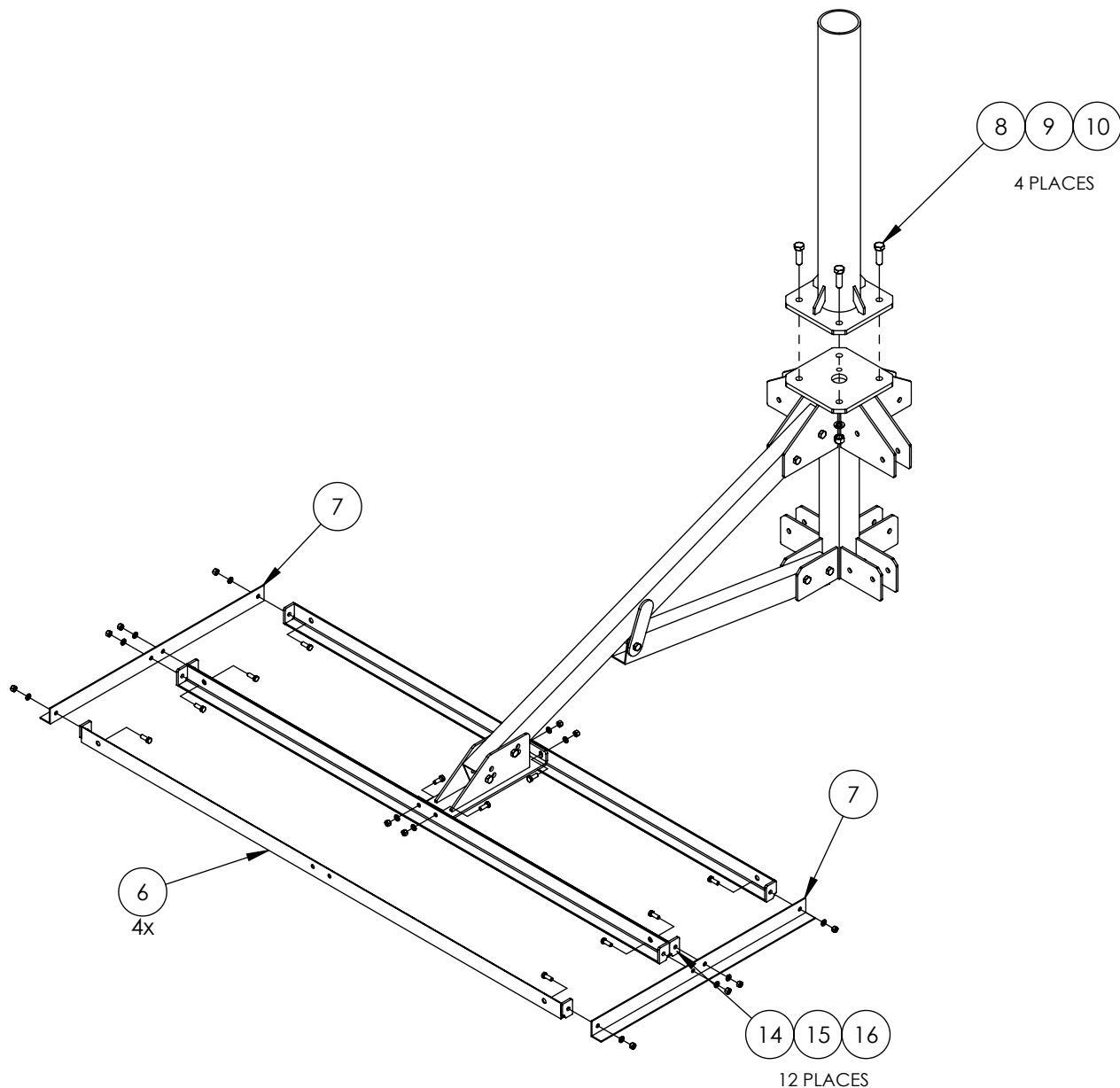
DATE
11/23/21

FINISH
HDG

SHEET
2 SCALE
-

PART. NO.
PL2-D-(000X0)-RP

DWG. NO.
PL2-D-(000X0)-RP ASSY INST



ASSEMBLE A BALLAST TRAY AND ATTACH TO THE FOOT ASS'Y, AS SHOWN ABOVE. USE FOUR 6' BALLAST ANGLES(#6), TWO DOUBLE TRAY SIDE PADS(#7)AND TWELVE 3/8"x1" BOLTS, LOCKWASHERS & NUTS. SEE THE DRAWING SHOWN ABOVE.
REPEAT FOR THE REMAINING THREE BALLAST TRAYS.

ATTACH THE MAST TO THE BASE USING FOUR 5/8"x2" BOLTS, LOCKWASHERS AND NUTS(#8,#9,#10)

PROPRIETARY AND CONFIDENTIAL

THE INFORMATION CONTAINED IN THIS DRAWING IS THE SOLE PROPERTY OF BAIRD SUPPORTING SYSTEMS. ANY REPRODUCTION IN PART OR AS A WHOLE WITHOUT THE WRITTEN PERMISSION OF BAIRD SUPPORTING SYSTEMS IS PROHIBITED.



WWW.BAIRD MOUNTS.COM

UNLESS OTHERWISE SPECIFIED:

DIMENSIONS ARE IN INCHES
TOLERANCES:
FRACTIONAL ±
ANGULAR: MACH ± BEND ±
TWO PLACE DECIMAL ±
THREE PLACE DECIMAL ±

DO NOT SCALE DRAWING

BAIRD MOUNTING SYSTEMS

WATERLOO, IA 50703
PHONE: 319-233-3561
SALES@BAIRDMOUNTS.COM

TITLE:
PL2, DOUBLE TRAY, MAST, RUBBER PAD

DRAWN BY
JK

MATERIAL
STEEL

DWG. PURPOSE
INST

DATE
11/23/21

FINISH
HDG

SHEET
3

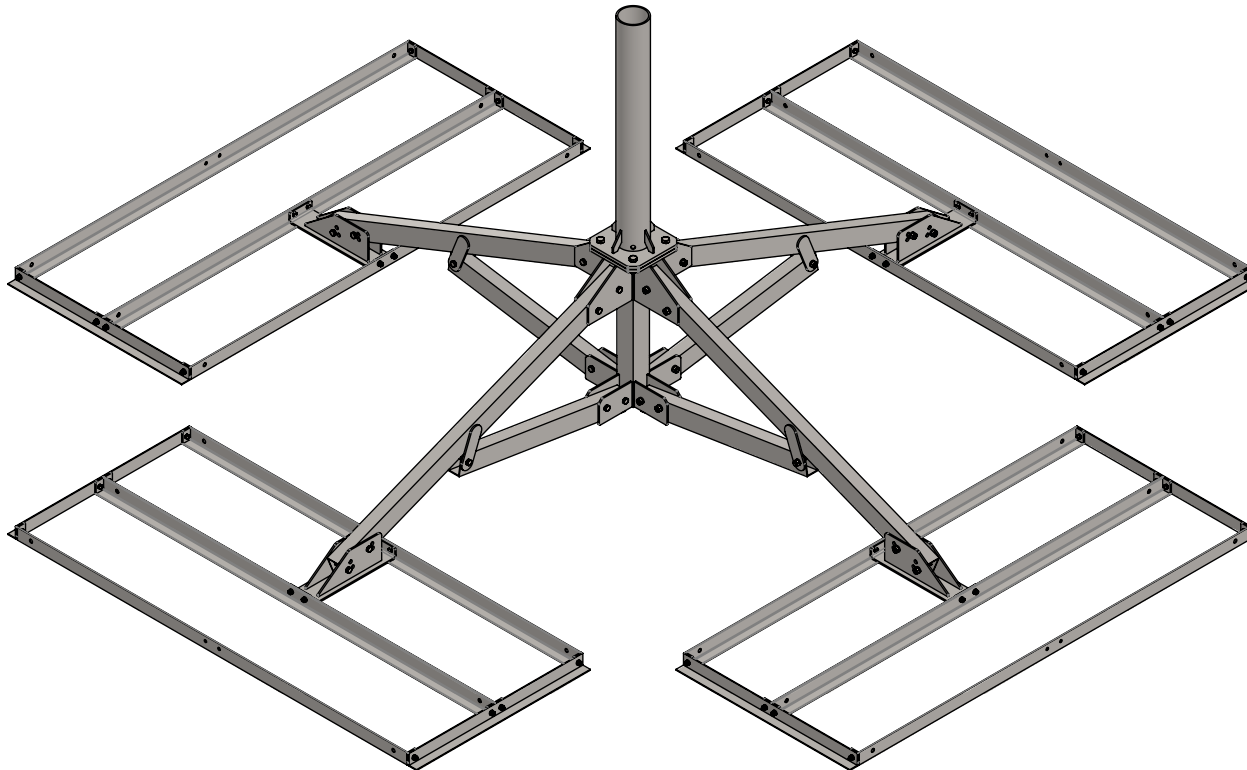
SCALE
-

PART. NO.
PL2-D-(000X0)-RP

DWG. NO.
PL2-D-(000X0)-RP ASSY INST

REV. 08/2022

PART NO.	MAST DIAMETER	WEIGHT
PL2-D-237X3	2.37"OD	435 lbs.
PL2-D-288X3	2.88"OD	442 lbs.
PL2-D-400X3	4.00"OD	452 lbs.
PL2-D-450X3	4.50"OD	457 lbs.
PL2-D-550X3	5.50"OD	487 lbs.
PL2-D-556X3	5.56"OD	469 lbs.
PL2-D-662X3	6.62"OD	483 lbs.



PROPRIETARY AND CONFIDENTIAL

THE INFORMATION CONTAINED IN THIS DRAWING IS THE SOLE PROPERTY OF BAIRD SUPPORTING SYSTEMS. ANY REPRODUCTION IN PART OR AS A WHOLE WITHOUT THE WRITTEN PERMISSION OF BAIRD SUPPORTING SYSTEMS IS PROHIBITED.



WWW.BAIRDMOUNTS.COM

UNLESS OTHERWISE SPECIFIED:

DIMENSIONS ARE IN INCHES
TOLERANCES:
FRACTIONAL ±
ANGULAR: MACH ± BEND ±
TWO PLACE DECIMAL ±
THREE PLACE DECIMAL ±

DO NOT SCALE DRAWING

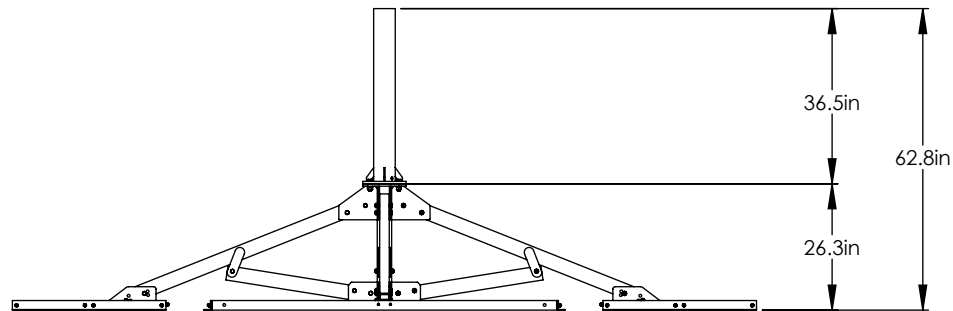
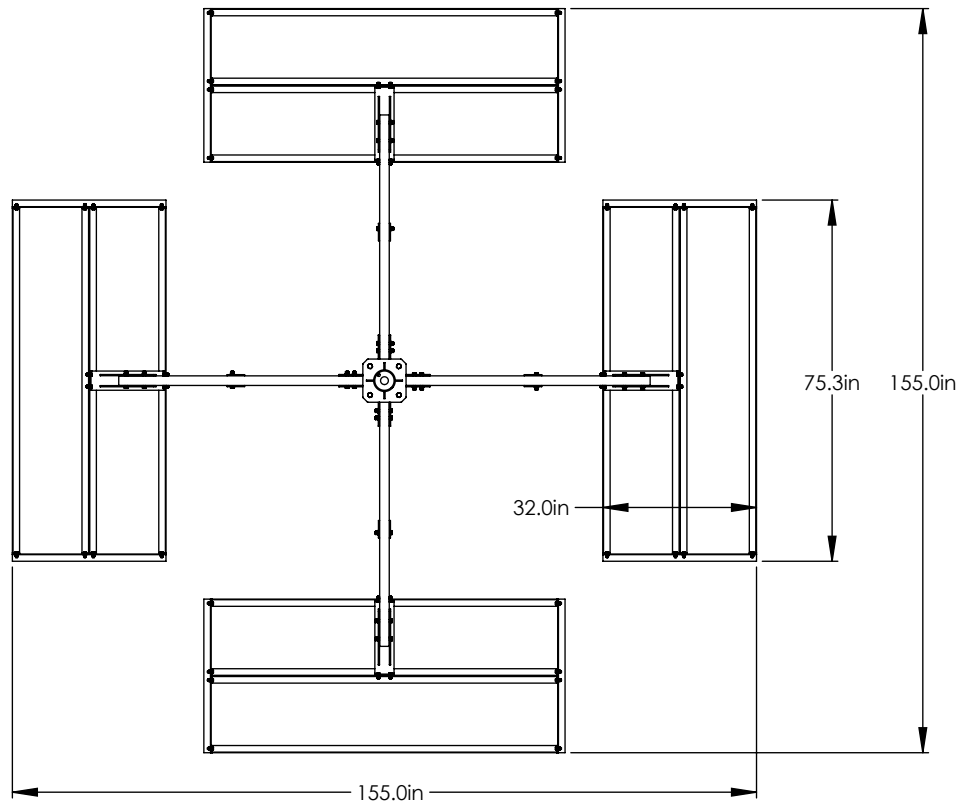
BAIRD MOUNTING SYSTEMS

WATERLOO, IA 50703
PHONE: 319-233-3561
SALES@BAIRDMOUNTS.COM

TITLE:

PL2, DOUBLE TRAY WITH 3' MAST

DRAWN BY JK	DATE 12/29/21
MATERIAL STEEL	FINISH HDG
DWG. PURPOSE CUSTOMER	SHEET 1 OF 2
SCALE -	
PART. NO. SEE TABLE	
DWG. NO. PL2-D-(000)X3	



PROPRIETARY AND CONFIDENTIAL

THE INFORMATION CONTAINED IN THIS DRAWING IS THE SOLE PROPERTY OF BAIRD SUPPORTING SYSTEMS. ANY REPRODUCTION IN PART OR AS A WHOLE WITHOUT THE WRITTEN PERMISSION OF BAIRD SUPPORTING SYSTEMS IS PROHIBITED.



WWW.BAIRD MOUNTS.COM

UNLESS OTHERWISE SPECIFIED:

DIMENSIONS ARE IN INCHES
TOLERANCES:
FRACTIONAL \pm
ANGULAR: MACH \pm BEND \pm
TWO PLACE DECIMAL \pm
THREE PLACE DECIMAL \pm

DO NOT SCALE DRAWING

BAIRD MOUNTING SYSTEMS

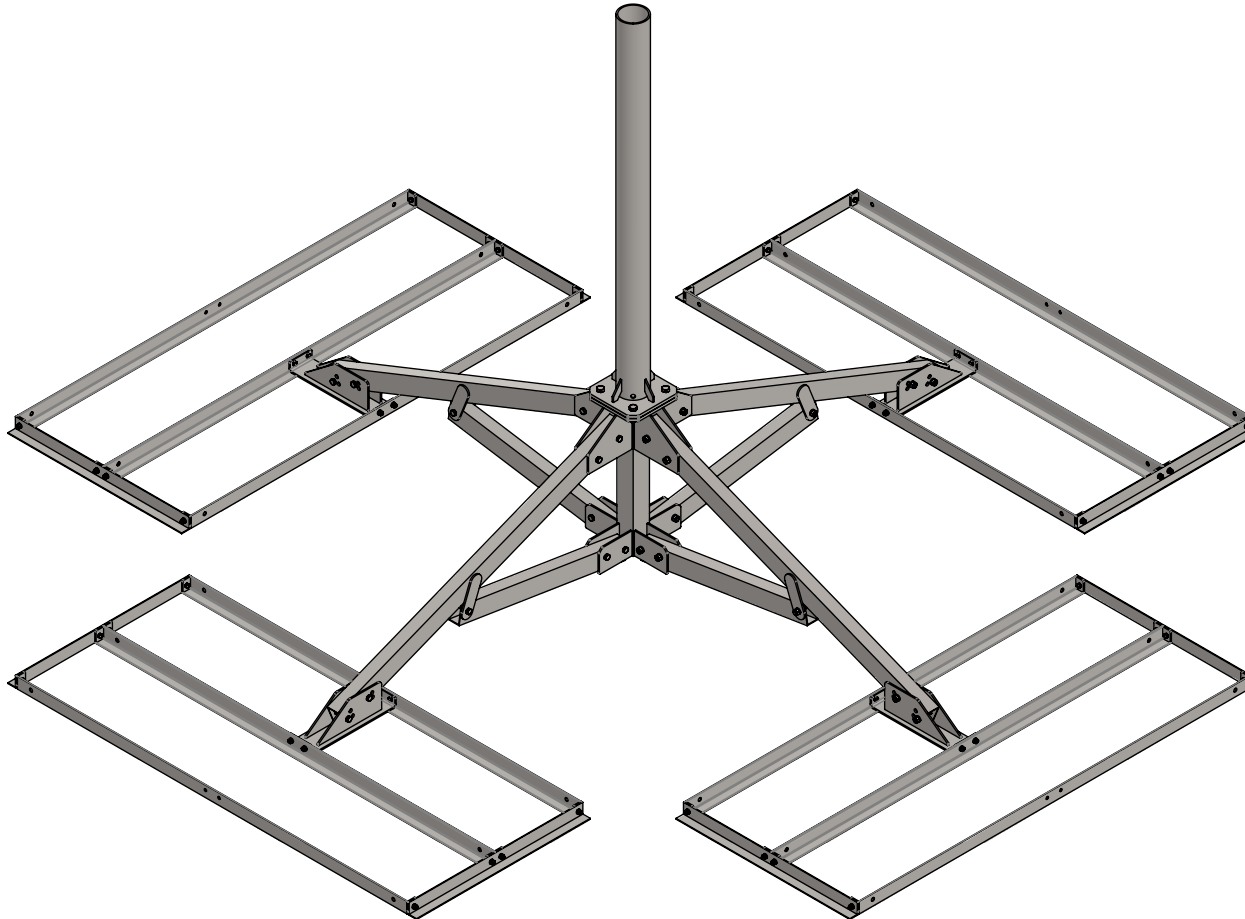
WATERLOO, IA 50703
PHONE: 319-233-3561
SALES@BAIRD MOUNTS.COM

TITLE:

PL2, DOUBLE TRAYS WITH 3' MAST

DRAWN BY JK	DATE 12/29/21
MATERIAL STEEL	FINISH HDG
DWG. PURPOSE CUSTOMER	SHEET 2OF2
SCALE -	
PART. NO. SEE TABLE- SHEET 1	
DWG. NO. PL2-D-(000)x3	

PART NO.	MAST DIAMETER	WEIGHT
PL2-D-237X5	2.37"OD	442 lbs.
PL2-D-288X5	2.88"OD	453 lbs.
PL2-D-450X5	4.50"OD	479 lbs.



PROPRIETARY AND CONFIDENTIAL
THE INFORMATION CONTAINED IN THIS DRAWING IS THE SOLE PROPERTY OF BAIRD SUPPORTING SYSTEMS. ANY REPRODUCTION IN PART OR AS A WHOLE WITHOUT THE WRITTEN PERMISSION OF BAIRD SUPPORTING SYSTEMS IS PROHIBITED.



WWW.BAIRDMOUNTS.COM

UNLESS OTHERWISE SPECIFIED:
DIMENSIONS ARE IN INCHES
TOLERANCES:
FRACTIONAL \pm
ANGULAR: MACH \pm BEND \pm
TWO PLACE DECIMAL \pm
THREE PLACE DECIMAL \pm

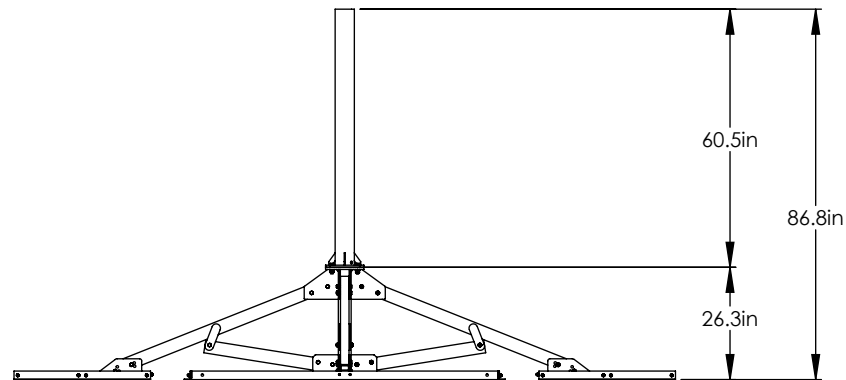
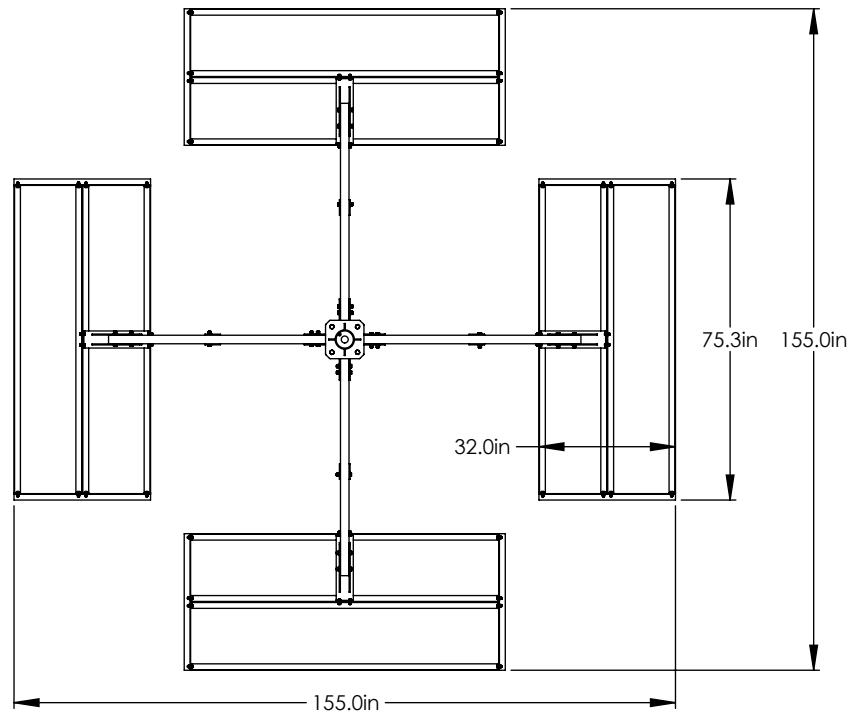
DO NOT SCALE DRAWING

BAIRD MOUNTING SYSTEMS

WATERLOO, IA 50703
PHONE: 319-233-3561
SALES@BAIRDMOUNTS.COM

TITLE:
PL2, DOUBLE TRAY WITH 5' MAST

DRAWN BY JK	DATE 12/29/21
MATERIAL STEEL	FINISH HDG
DWG. PURPOSE CUSTOMER	SHEET 1 OF 2
SCALE -	
PART. NO. SEE TABLE	
DWG. NO. PL2-D-(000)X5	



PROPRIETARY AND CONFIDENTIAL

THE INFORMATION CONTAINED IN THIS DRAWING IS THE SOLE PROPERTY OF BAIRD SUPPORTING SYSTEMS. ANY REPRODUCTION IN PART OR AS A WHOLE WITHOUT THE WRITTEN PERMISSION OF BAIRD SUPPORTING SYSTEMS IS PROHIBITED.



WWW.BAIRDMOUNTS.COM

UNLESS OTHERWISE SPECIFIED:

DIMENSIONS ARE IN INCHES
TOLERANCES:
FRACTIONAL ±
ANGULAR: MACH ± BEND ±
TWO PLACE DECIMAL ±
THREE PLACE DECIMAL ±

DO NOT SCALE DRAWING

BAIRD MOUNTING SYSTEMS

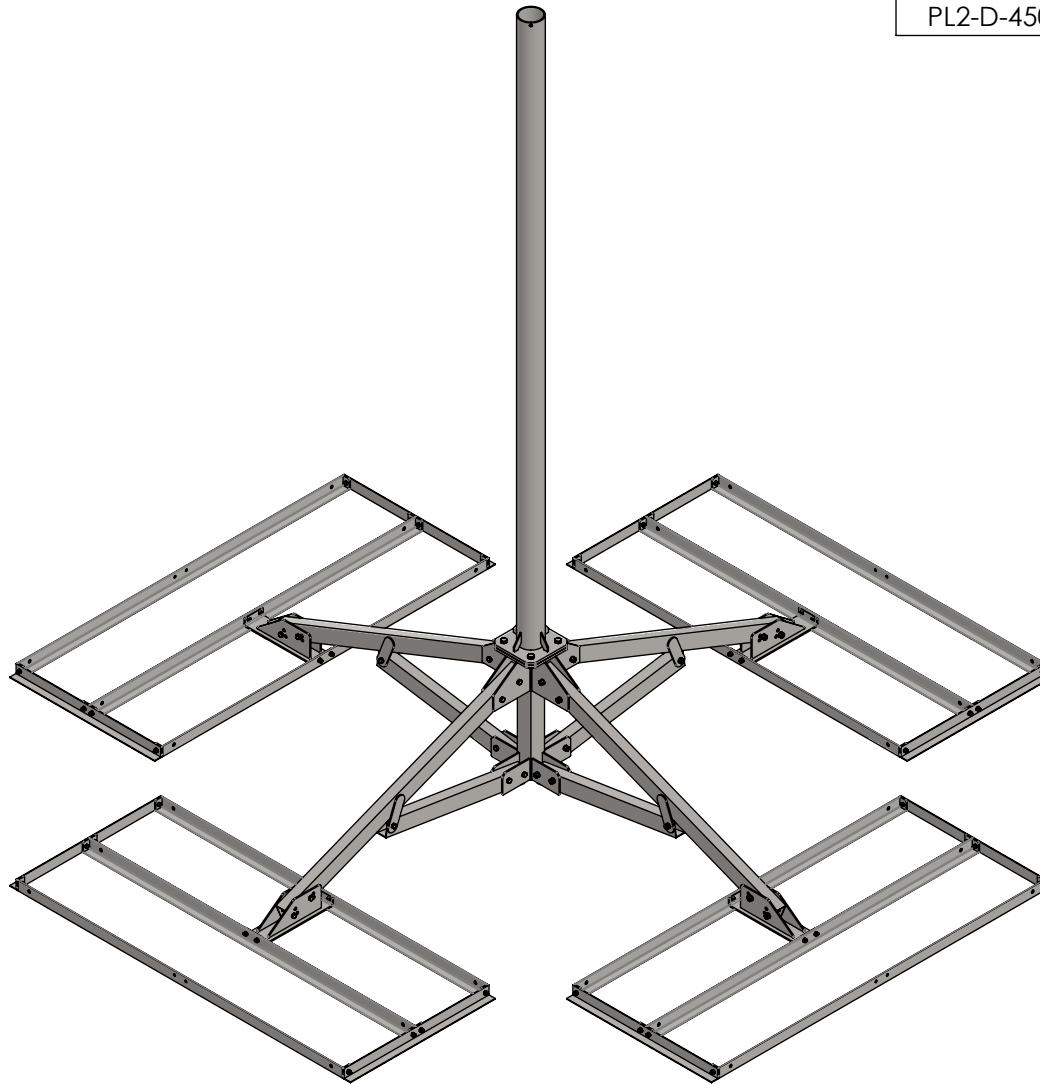
WATERLOO, IA 50703
PHONE: 319-233-3561
SALES@BAIRDMOUNTS.COM

TITLE:

PL2, DOUBLE TRAYS WITH 5' MAST

DRAWN BY JK	DATE 12/29/21
MATERIAL STEEL	FINISH HDG
DWG. PURPOSE CUSTOMER	SHEET 2OF2
SCALE -	
PART. NO. SEE TABLE- SHEET 1	
DWG. NO. PL2-D-(000)x5	

PART NO.	MAST DIAMETER	WEIGHT
PL2-D-237X10	2.37"OD	459 lbs.
PL2-D-288X10	2.88"OD	482 lbs.
PL2-D-450X10	4.50"OD	533 lbs.



PROPRIETARY AND CONFIDENTIAL
THE INFORMATION CONTAINED IN THIS DRAWING IS THE SOLE PROPERTY OF BAIRD SUPPORTING SYSTEMS. ANY REPRODUCTION IN PART OR AS A WHOLE WITHOUT THE WRITTEN PERMISSION OF BAIRD SUPPORTING SYSTEMS IS PROHIBITED.



WWW.BAIRD MOUNTS.COM

UNLESS OTHERWISE SPECIFIED:
DIMENSIONS ARE IN INCHES
TOLERANCES:
FRACTIONAL \pm
ANGULAR: MACH \pm BEND \pm
TWO PLACE DECIMAL \pm
THREE PLACE DECIMAL \pm

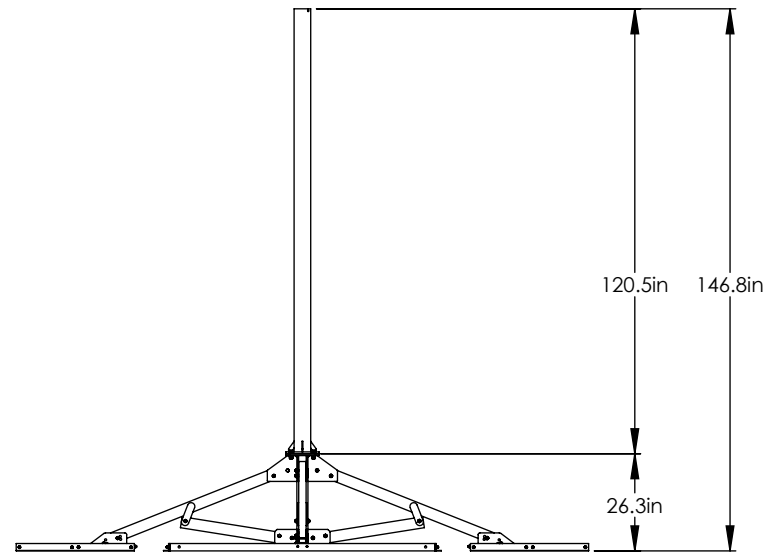
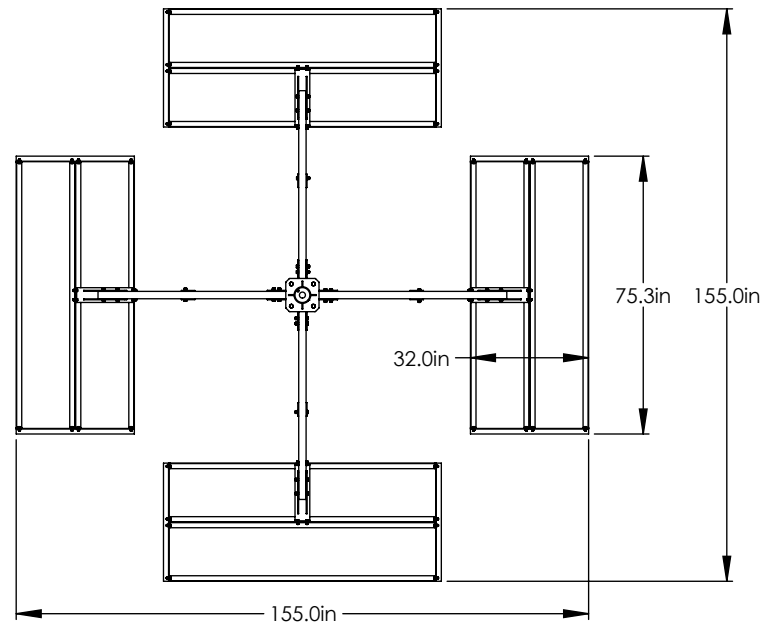
DO NOT SCALE DRAWING

BAIRD MOUNTING SYSTEMS

WATERLOO, IA 50703
PHONE: 319-233-3561
SALES@BAIRD MOUNTS.COM

TITLE:
PL2, DOUBLE TRAY WITH 10' MAST

DRAWN BY JK	DATE 12/29/21
MATERIAL STEEL	FINISH HDG
DWG. PURPOSE CUSTOMER	SHEET 1 OF 2
PART. NO. SEE TABLE	SCALE -
DWG. NO. PL2-D-(000)X10	



PROPRIETARY AND CONFIDENTIAL

THE INFORMATION CONTAINED IN THIS DRAWING IS THE SOLE PROPERTY OF BAIRD SUPPORTING SYSTEMS. ANY REPRODUCTION IN PART OR AS A WHOLE WITHOUT THE WRITTEN PERMISSION OF BAIRD SUPPORTING SYSTEMS IS PROHIBITED.



WWW.BAIRDMOUNTS.COM

UNLESS OTHERWISE SPECIFIED:

DIMENSIONS ARE IN INCHES
TOLERANCES:
FRACTIONAL \pm
ANGULAR: MACH \pm BEND \pm
TWO PLACE DECIMAL \pm
THREE PLACE DECIMAL \pm

DO NOT SCALE DRAWING

BAIRD MOUNTING SYSTEMS

WATERLOO, IA 50703
PHONE: 319-233-3561
SALES@BAIRDMOUNTS.COM

TITLE:

PL2, DOUBLE TRAYS WITH 10' MAST

DRAWN BY JK	DATE 12/29/21
MATERIAL STEEL	FINISH HDG
DWG. PURPOSE CUSTOMER	SHEET 2OF2
SCALE -	
PART. NO. SEE TABLE- SHEET 1	
DWG. NO. PL2-D-(000)x10	